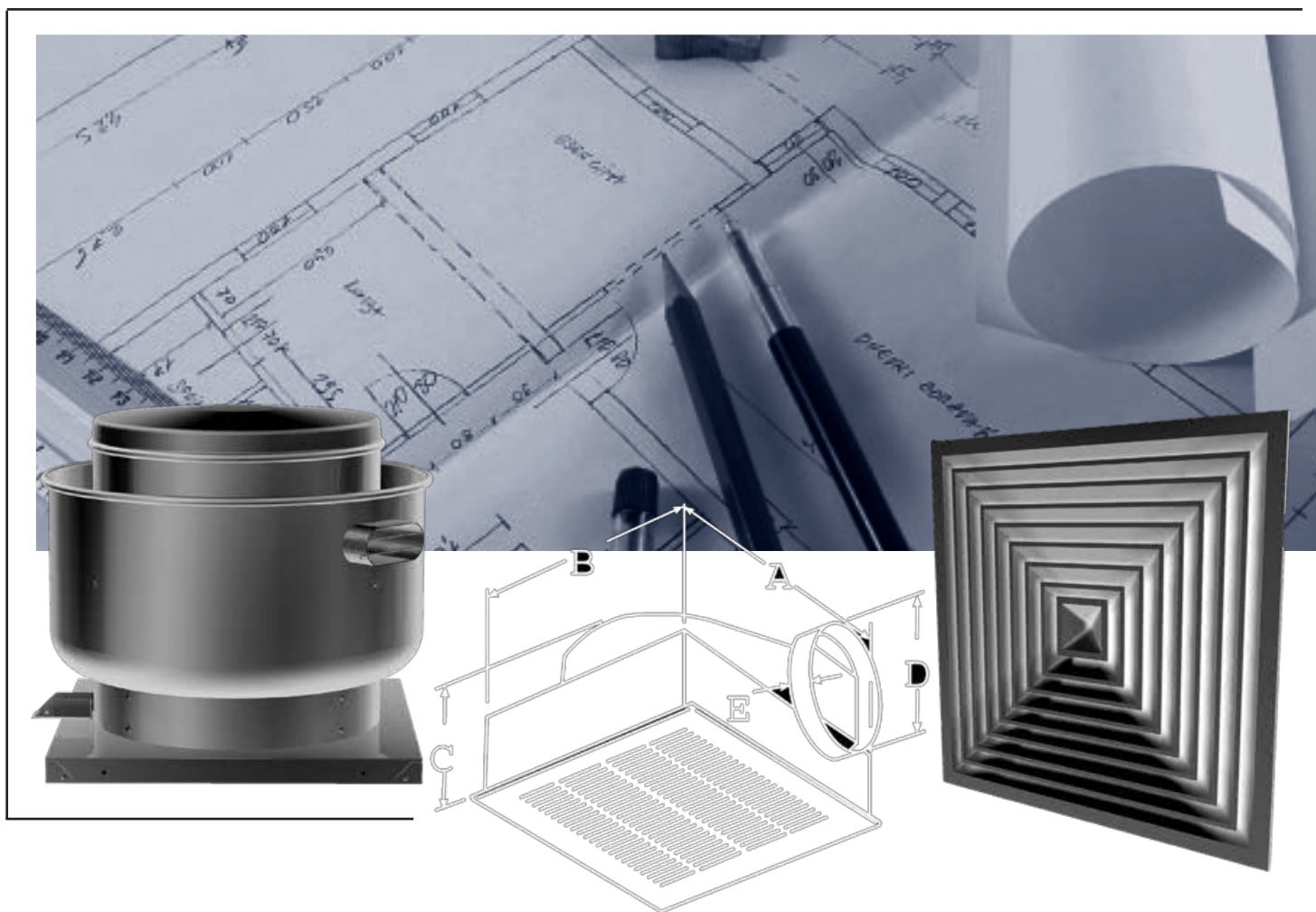


COLBY equipment

2014 Warehouse Stock Catalog



Representing the industry leaders in mechanical and air distribution equipment since 1930.

Colby Equipment Company, Inc.
Indianapolis, Indiana • Fort Wayne, Indiana
www.colbyequipment.com



Colby Equipment Company is committed to providing the best service in our industry. This commitment begins with an extensive line of products available in our warehouse. The 2014 Warehouse Stock Catalog introduces many new items and several products with lower pricing. It represents the largest warehouse offering in our 84 year history.

Through our partnerships with local logistics companies, we have access to a fleet of over 75 delivery vehicles in every size. This allows us to ensure your order is delivered to its destination at the precise time you need—no waiting around for a delivery route to reach your stop. Tell us the time you need it, and we will get it there—guaranteed.

For your convenience, an electronic version of this catalog is available on our web site at www.colbyequipment.com. The electronic version is continually updated to reflect the latest products and information available.

Please contact our sales staff to discuss any of the products listed in this catalog. They are available to answer any technical questions, or to provide assistance in product selection and application.

Indianapolis Office / Warehouse
3048 Ridgeview Drive • Indianapolis, Indiana 46226
(800) 443-2981 • (317) 545-4221

Commercial Sales Kim Colby, John Fillio, Tim Ohime, Andrea Thompson,
Brian Smith, Darin Thompson, Troy Allen
Industrial Sales Dave Clevenger, Jim McAnally, Chuck Livengood
Engineer Sales Tom Hall
Estimating Matt Eldridge, Mike McDermott, Dan McLaughlin
Inside Sales Beth Crafton, Heather Mote, Brandy Reynolds,
Janet Simpson, Cindy Smith
Warehouse Joe O'Brien, Lacy Boyd

Fort Wayne Office
3107 Cannongate Drive • Fort Wayne, Indiana 46808
(866) 482-3773 • (260) 482-3773

Commercial Sales Mike Cotter
Industrial Sales John Dundon
Inside Sales Joyce McAbee

Page

fans, ventilators & accessories

- 4 Greenheck G/GVG/GB Exhaust Fan
- 5 Greenheck CUEVG/CUBE Exhaust Fan
- 6 Greenheck GRS Spun Aluminum Gravity Ventilators
- 7 Greenheck SP Ceiling Exhaust Fan
- 8 Greenheck CSP Inline Cabinet Exhaust Fans
- 8 Broan 688 Ceiling/Wall Exhaust Fan
- 9 Greenheck BSQ Belt Drive Supply/Exhaust Fan
- 10-13 Fan Accessories
- 14 Franklin Control BAS Starter and BAS-1P Starter



Page

electric/gas heaters

- 15 Markel Series 5100 Fan Forced Suspend Unit Heater
- 16 Markel Series 3320 Fan Forced Wall Heater
- 17 Markel Series 3480 Fan Forced Ceiling Heaters
- 18 Lennox TUA Gas Heaters
- 19 Lennox LF Gas Heaters



Page

grilles, registers & diffusers

- 20 Price Industries 520D Supply Register / 530 Return Grille
- 21 Price Industries 80 Series Eggcrate Products
- 22 Price Industries SCD / SCDA Square Cone Diffuser
- 23 Price Industries SPD / SMD Lay-in Diffusers
- 24 Price Industries LCMD Diffuser / Varitherm HC Diffuser
- 25 Price Industries SDG Spiral Mounted Registers/RCDE Diffuser
- 26 Price Industries PDF/PDC Square Perforated Supply Diffuser
- 27 Price Industries PDDR Square Perforated Return Diffuser
- 27 Price Industries AMF Aluminum Mounting Frame
- 28 Price Industries TBD/TBDI T-Bar Slot Diffuser
- 29-30 GRD Accessories



Page

terminal units

- 31 Price Industries SPV Pneumatic VAV Terminal Unit/SDV DDC VAV Terminal Unit
- 32 Price Industries VAV Accessories



Page

dampers & louvers

- 33 Greenheck FD-150 Static Fire Damper
- 33 Greenheck BVE Brick Vent
- 34 Greenheck CRD-2 Ceiling Radiation Fire Damper/TIB Thermal Insulating Blanket
- 34 Greenheck WD Automatic Backdraft Damper



Page

sheet metal products

- 35-36 EASTERN TIGHT Spiral Pipe and Fittings
- 37 Sheet Metal Pipe and Fittings
- 38 Flexible Duct
- 38 Access Doors
- 39 Design Polymerics Duct Sealant
- 39 Nylon Duct Straps, SS Duct Clamps
- 40 Gripple Hang-Fast System



Page

parts

- 41 Greenheck Fan Motors, Fire Damper Fusible Links, Control Damper Shaft Extensions
- 41 Price VAV Parts



Greenheck G/GVG/GB Fans

Centrifugal Roof Exhauster

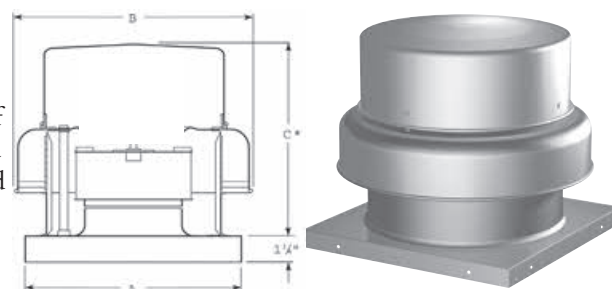
Model G/GVG/GB Centrifugal Exhaust Fans are designed for roof mounted applications exhausting relatively clean air. They feature a spun aluminum housing and a non-overloading, backward inclined aluminum wheel. Motors are located out of the air stream with positive cooling by ambient air. Fans are UL listed and licensed to bear the AMCA Certified Ratings Seals for air and sound performance.

Stock Notes

- Units are stocked with 115/60/1 motors
- Nema-1 disconnect switch included
- Rigid wire birdscreen included

Available Accessories

- Prefab roof curbs
- Speed controls (Model G only)
- Frankling Controls Starter Backdraft dampers (Model WD-100)



Dimensional Data

Model	A	B	C*	Roof Opening	Damper
G-65, G-75	17"	19 3/8"	12 1/8"	10 1/2"	8"x8"
G-80, 90, 95	17"	21 3/4"	14 5/8"	12 1/2"	10"x10"
GVG-99	19"	24 3/8"	23 3/4"	14 1/2"	12"x12"
GVG-123	19"	24 3/8"	23 3/4"	14 1/2"	12"x12"
GVG-143	22"	28 3/8"	23 3/4"	18 1/2"	16"x16"
GB-180	30"	35 1/2"	28"	20 1/2"	18"x18"

* C dimension may be greater depending on motor

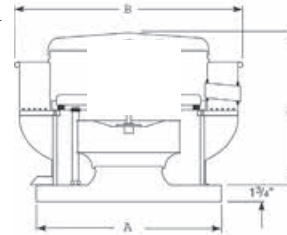
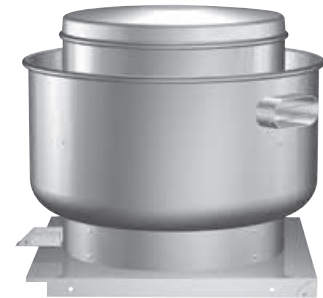
Performance & Pricing Data

DIRECT DRIVE G																	
Model		HP	RPM	TS	Sones @ 0 in.	Max BHP	Pressure in inches WG							Fan List Price	Curb List Price	Damper List Price	
							0	.125	.25	.375	.5	.625	.75				
G-65 3-Speed	E	1/100	1050	2234	2.2	.01	187	110						\$455.00	\$134.00	\$83.00	
	G	1/60	1300	2765	2.7	.01	231	178	92								
	D	1/30	1550	3297	4.3	.02	276	232	176	96							
G-80 3-Speed	E	1/40	1050	2990	4.2	.02	335	249	134					\$505.00	\$134.00	\$90.00	
	G	1/30	1300	3701	5.5	.03	415	348	272	174							
	D	1/20	1550	4413	7.2	.06	495	439	379	314	237						
G-90 3-Speed	E	1/40	1050	2990	4.2	.02	520	420	293					\$505.00	\$134.00	\$90.00	
	G	1/25	1300	3701	5.5	.05	644	565	478	373							
	D	1/15	1550	4413	7.4	.08	768	701	633	557	473	338					
G-95 3-Speed	E	1/30	1050	2990	4.5	.04	717	570	389					\$505.00	\$134.00	\$90.00	
	G	1/12	1300	3701	6.4	.07	888	780	640	493	184						
	D	1/8	1550	4413	8.8	.12	1059	969	863	745	623	474					
DIRECT DRIVE																	
Model		HP	RPM	TS	Sones @ 0	Max BHP	Pressure in inches WG							Fan List Price	Curb List Price	Damper List Price	
							0	0.125	0.25	0.375	0.5	0.625	0.75				
GVG-99	1/4	720	2108	3.6	0.02	546	403							\$1052.00	\$134.00	\$94.00	
		1070	3134	7.3	0.06	811	718	621	512								
		1725	5052	13.6	0.25	1307	1250	1192	1135	1076	1013	949					
GVG-123	1/2	580	1983	3.2	0.02	704	515							\$1163.00	\$134.00	\$94.00	
		1265	4326	10.2	0.20	1535	1460	1384	1299	1204	1093	950					
		1725	5899	17.4	0.5	2093	2038	1984	1928	1871	1810	1743					
GVG-143	3/4	580	2220	4.7	0.04	1076	855							\$1336.00	\$155.00	\$107.00	
		1140	4365	11	0.31	2115	2008	1905	1792	1660		1233					
		1725	6605	20	1.09	3200	3129	3059	2991	2923		2782					
BELT DRIVE GB																	
Model		HP	RPM	TS	Sones @ 0	Max BHP	Pressure in inches WG							Fan List Price	Curb List Price	Damper List Price	
							0	0.125	0.25	0.375	0.5	0.625	0.75				
GB-180-5X	1/2	825	3995	9.1	0.37	3208	3059	2899	2458					\$1465.00	\$212.00	\$138.00	
		860	4164	10.1	0.42	3344	3202	3049	2647	2015							
		940	4552	12.7	0.54	3655	3527	3388	3052	2601							

Greenheck CUEVG/CUBE Fan

Centrifugal Upblast Exhauster

Model CUEVG/CUBE Exhaust Fans are designed specifically for roof mounted applications exhausting dirty or grease laden air. They feature a spun aluminum housing and a non-overloading, backward inclined aluminum wheel. Motors are located out of the air stream with positive cooling by ambient air. Exhausted air is discharged directly upward, away from the roof surface. CUEVG/CUBE fans are UL listed and licensed to bear the AMCA Certified Ratings Seals for air and sound performance.



Stock Notes

- Units are stocked with 115/60/1 motors
- Nema-1 disconnect switch included
- Vibration isolation for motor and drive
- UL 762 listed for grease

Available Accessories

- Prefab roof curbs
- Backdraft dampers for clean air (Model WD-100)
- Franklin Controls Starter

Dimensional Data

Model	A	B	C*	Roof Opening	Damper
CUEVG-101	19"	24 7/8"	28 1/4"	14 1/2"	12"x12"
CUEVG -141	22"	28 7/8"	29 3/4"	18 1/2"	16"x16"
CUBE-161	22"	28 7/8"	29 3/4"	18 1/2"	16"x16"

* C dimension may be greater depending on motor

Performance & Pricing Data

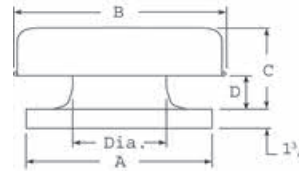
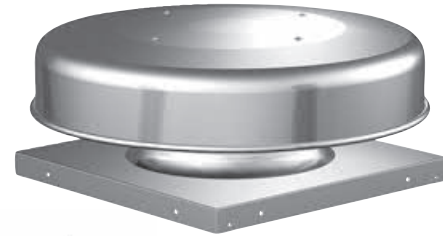
DIRECT DRIVE CUBE															
Model	HP	RPM	TS	Sones @ 0	Max HP	Pressure in inches WG							Fan List Price	Curb List Price	Damper List Price
						0	0.125	0.25	0.375	0.5	0.75	1			
CUEVG-101	1/4	860	2447	4.6	0.36	732	625	481					\$1419.00	\$134.00	\$94.00
		1252	3563	8	0.11	1066	1000	920	834	732					
		1725	4909	13.3	0.29	1468	1422	1373	1315	1255	1129	970			
CUEVG-141	3/4	590	2259	5	0.04	1069	851						\$1489.00	\$155.00	\$107.00
		1210	4633	12.2	0.34	2192	2106	2006	1896	1773	1443				
		1725	6605	26	1	3124	3066	3005	2936	2865	2711	2539			
BELT DRIVE CUBE															
Model	HP	RPM	TS	Sones @ 0	Max HP	Pressure in inches WG							Fan List Price	Curb List Price	Damper List Price
						0	0.125	0.25	0.375	0.5	0.75				
CUBE-161	3/4	1140	4961	15.7	0.58	3277	3161	3035	2896	2745	2421		\$1684.00	\$155.00	\$107.00
		1265	5505	18.5	0.79	3636	3532	3426	3301	3172	2894				



Greenheck GRS

Spun Aluminum Gravity Ventilators

Model GRS Spun Aluminum Gravity Ventilators are designed for intake or relief applications with either natural gravity or positive pressure systems. The GRS appearance blends with the other products in the Greenheck family and with its low silhouette, avoids the problem of detracting for architectural aesthetics.



Stock Notes

- Aluminum curb cap with pre-punched mounting holes
- Rigid wire birdscreen included
- Recommended roof opening dimension is at least 2.5 in. larger than damper size.

Available Accessories

- Prefab roof curbs
- Backdraft damper WD-100 (relief only)

Dimensional Data

Model	A	B	C	D	Dia.	Damper
GRS-8	19"	20 1/2"	7 1/4"	1 1/2"	8 1/4"	8"x8"
GRS-10	19"	20 1/2"	7 3/4"	2"	10 1/4"	10"x10"
GRS-12	22"	29"	10"	3 1/2"	12 1/4"	12"x12"
GRS-15	22"	29"	10"	3 1/2"	14 1/4"	16"x16"
GRS-18	30"	35 1/2"	9 3/4"	1 3/4"	20 1/4"	18"x18"
GRS-24	34"	38 1/4"	11"	4"	24 1/2"	24"x24"

Performance & Pricing Data

Model		Capacity (CFM) in inches WG									Fan List Price	Curb List Price	Damper List Price
		0.04	0.06	0.08	0.1	0.15	0.20	0.25	0.3	0.35			
GRS-8	Relief	231	282	326	365	446	516	576	631	682	\$200.00	\$134.00	\$83.00
	Intake	178	218	252	282	345	398	445	488	527			
GRS-10	Relief	331	406	468	524	641	741	828	907	980	\$220.00	\$134.00	\$90.00
	Intake	279	342	395	442	541	624	698	765	826			
GRS-12	Relief	468	573	662	740	907	1047	1171	1282	1385	\$231.00	\$155.00	\$94.00
	Intake	400	490	566	633	775	895	1001	1097	1184			
GRS-15	Relief	663	811	937	1048	1283	1481	1656	1814	1960	\$316.00	\$155.00	\$107.00
	Intake	553	677	782	874	1071	1237	1383	1515	1636			
GRS-18	Relief	1060	1298	1499	1676	2052	2370	2649	2902	3135	\$395.00	\$212.00	\$138.00
	Intake	901	1104	1274	1425	1745	2015	2253	2468	2665			
GRS-24	Relief	1879	2301	2657	2971	3638	4201	4697	5145	5558	\$601.00	\$241.00	\$149.00
	Intake	1542	1888	2180	2438	2985	3447	3854	4222	4560			

Greenheck SP Fan

Ceiling Exhaust Fans

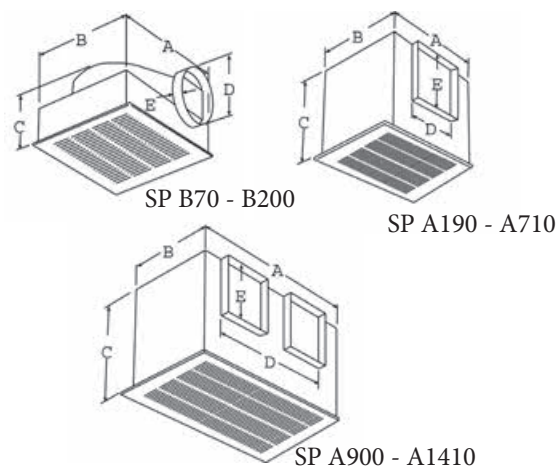
Model SP Ceiling Exhaust Fans are designed for applications where low sound levels are critical. They are ideal selections for offices, conference rooms and restrooms. Their low sound levels are achieved through quiet running forward curved wheels. Models SP-A190 and higher also feature a 1/2" of acoustical insulation in housing for an even quieter performance. All model SP fans are UL listed and licensed to bear the AMCA Certified Ratings Seals for air and sound performance.

Stock Notes

- Units are stocked with 115/60/1 motors
- Plug-in disconnect switch included
- Integral backdraft damper

Available Accessories

- Speed controls
- Wall and discharge accessories
- Line Voltage Thermostats (Heat or Cool)



Dimensional Data

Model	A	B	C	Outlet	
				D	E
SP-B70	13 7/8"	11 1/2"	7"	6" Dia.	1 1/4"
SP-B90 to SP-B200	13 7/8"	11 1/2"	7"	6" Dia.	1 1/4"
SP-A190	13 1/4"	10 5/8"	9"	8"	6"
SP-A290	14"	11 7/8"	11 1/4"	8"	8"
SP-A410, SP-A510	18"	14 3/8"	14 1/2"	8"	8"
SP-A710	18"	14 3/8"	14 1/2"	10"	8"
SP-A900 to SP-A1410	23 3/4"	14 3/8"	14 1/2"	18 3/4"	8"

Performance & Pricing Data

Model	RPM	AMPS	Watts	Pressure in inches WG										List Price
					0	.100	.125	.250	.375	.500	.625	.750	1.000	
SP-B70	675	0.53	45.1	CFM	77	71	68	57	49	39				\$157.00
				Sones	1.2	1.4	1.4	2.0	2.5	3.0				
SP-B90	700	0.65	49.7	CFM	101	89	88	75	59	45	30			\$166.00
				Sones	1.5	2.0	2.0	2.5	3.0	3.5	4.0			
SP-B110	950	1.14	80.2	CFM	133	114	110	97	95	94	91	85	50	\$177.00
				Sones	1.5	1.5	1.5	2.0	2.0	2.0	3.0	3.5	4.5	
SP-B150	1050	1.70	128	CFM	160	156	155	154	152	149	147	138	92	\$197.00
				Sones	2.5	2.5	2.5	3.0	3.5	3.5	4.0	4.5	5.0	
SP-B200	1100	2.20	172	CFM	197	195	194	191	187	184	181	166	128	\$220.00
				Sones	3.5	4.0	4.0	4.5	4.5	5.0	5.0	5.5	5.5	
SP-A190	1400	1.30	113	CFM	216	197	192	167	133					\$337.00
				Sones	2.5	2.5	2.5	2.5	2.5					
SP-A290	1050	0.72	80.7	CFM	315	293	287	257	231	207	175	124		\$373.00
				Sones	2.5	2.5	2.5	3.0	3.0	3.5	3.5	4.5		
SP-A410	1000	1.74	121	CFM	443	413	405	351	306					\$420.00
				Sones	3.5	3.0	3.0	3.0	3.5					
SP-A510	1070	3.30	224	CFM	557	512	501	439	392	325				\$420.00
				Sones	5.0	4.5	4.5	4.5	4.5	4.0				
SP-A710	1080	4.40	285	CFM	752	714	701	653	588	486	320			\$634.00
				Sones	6.0	6.0	6.0	6.0	6.0	5.5	5.5			
SP-A900	950	4.00	285	CFM	955	907	896	841	773	701				\$924.00
				Sones	4.0	5.0	5.0	5.0	5.0	5.0				
SP-A1050	1095	6.30	420	CFM	1125	1059	1043	964	885	796	662			\$924.00
				Sones	6.0	6.0	6.0	6.0	5.5	5.5	5.5			
SP-A1410	1450	7.40	786	CFM	1455	1414	1415	1353	1307	1262	1218	1174		\$924.00
				Sones	10.0	10.0	10.0	10.0	10.0	10.0	10.0	10.0		



Greenheck CSP Fan

Inline Cabinet Exhaust Fan

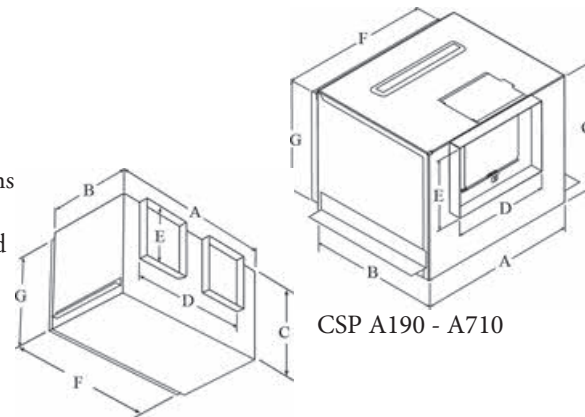
Model CSP Inline Cabinet Fans are designed for clean air applications where low sound levels are desired. They can be used for supply, exhaust or return applications within a duct system. Their low sound levels are achieved through quiet running forward curved wheels and an acoustically insulated housing. The outlet duct includes an integral aluminum backdraft damper that is easily converted from horizontal to vertical discharge positions. Model CSP fans are UL listed and licensed to bear the AMCA Certified Ratings Seals for air and sound performance.

Stock Notes

- Units are stocked with 115/60/1 motors
- Plug-in disconnect switch included
- Integral backdraft damper
- Models will be shipped with an SP ceiling fan and a kit to convert fan to CSP- perf. not affected.

Available Accessories

- Speed controls
- Wall and discharge accessories
- Line Voltage Thermostats (Heat or Cool)



CSP A190 - A710

CSP A900 - A1710

Dimensional Data

Model	A	B	C	Outlet		Inlet	
				D	E	F	G
CSP-A190	13 1/4"	10 5/8"	9"	8"	6"	12"	9 1/4"
CSP-A290	14"	11 7/8"	11 1/4"	8"	8"	12 7/8"	10"
CSP-A410, CSP-A510	18"	14 3/8"	14 1/2"	8"	8"	16 7/8"	13 1/4"
CSP-A710	18"	14 3/8"	14 1/2"	10"	8"	16 7/8"	13 1/4"
CSP-A900 to CSP-A1410	23 3/4"	14 3/8"	14 1/2"	18 3/4"	8"	22 5/8"	13 1/4"
CSP-A1750	35"	14 3/4"	14 3/4"	28"	6"	32 3/4"	13"

Performance & Pricing Data

Model	RPM	AMPS	Watts	Pressure in inches WG										List Price
					0	.100	.125	.250	.375	.500	.625	.750	1.000	
CSP-A190	1400	1.10	100	CFM	215	202	198	180	159	121				\$357.00
				Sones	2.0	1.5	2.0	2.0	2.5	2.5				
CSP-A290	1050	0.71	80.7	CFM	318	299	292	265	248	229	201	144		\$397.00
				Sones	1.1	1.2	1.3	2.0	2.5	3.5	3.0	3.0		
CSP-A410	1000	1.87	135	CFM	447	411	403	364	317	217				\$450.00
				Sones	1.5	1.5	1.5	2.0	2.0	2.0				
CSP-A510	1070	3.11	217	CFM	545	514	506	464	405	324				\$450.00
				Sones	2.5	2.0	2.0	2.0	2.0	2.5				
CSP-A710	1080	4.40	325	CFM	737	698	688	635	567	475	334			\$664.00
				Sones	2.5	2.5	2.5	2.5	2.0	2.0	2.0			
CSP-A900	950	4.87	328	CFM	908	852	841	782	715	631				\$974.00
				Sones	1.4	1.4	1.4	2.0	2.5	3.0				
CSP-A1050	1095	6.65	455	CFM	1182	1110	1093	1013	922	832	743			\$974.00
				Sones	2.5	2.5	2.5	2.5	2.5	2.5	2.5			
CSP-A1410	1450	7.80	822	CFM	1584	1543	1533	1483	1439	1395	1345	1293	1181	\$974.00
				Sones	3.5	3.5	3.5	3.5	3.5	3.5	3.5	3.5	4.0	

Broan 688

Ceiling / Wall Exhaust Fan

Model	Volts	AMPS	Sones	CFM	Duct	List Price
688	120	0.9	4.0	50	3"	\$66.00



Greenheck BSQ Fan

Square Inline Supply/Exhaust Fan

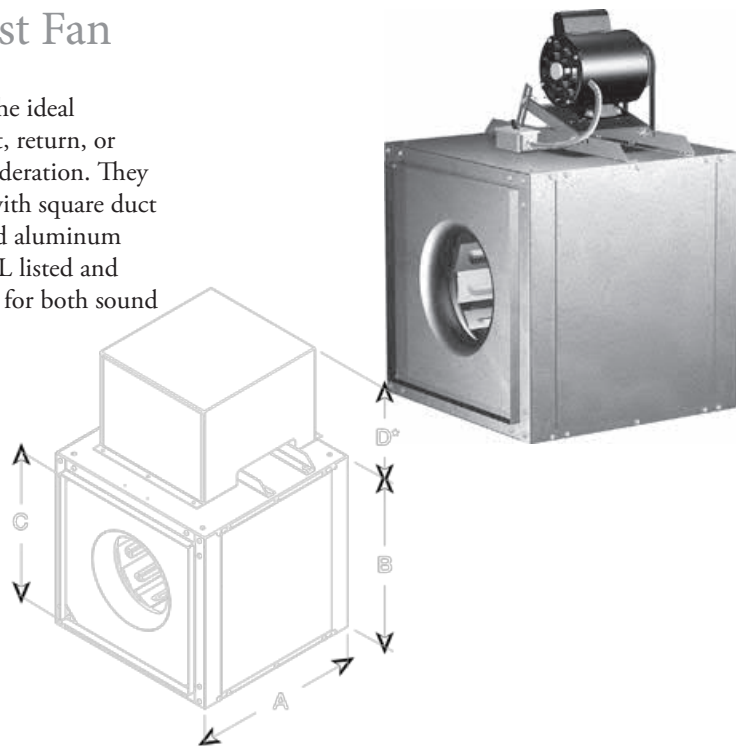
Model BSQ centrifugal inline belt drive fans are the ideal selection for clean air applications (intake, exhaust, return, or make-up air systems) where space is a prime consideration. They feature heavy gauge galvanized steel fan housing with square duct mounting collars, two removable access panels and aluminum backward inclined wheels. Model BSQ fans are UL listed and licensed to bear the AMCA Certified Ratings Seal for both sound and air performance.

Stock Notes

- Units are stocked with 115/60/1 motors
- Nema-1 disconnect switch included
- Motor cover

Available Accessories

- Franklin Controls Starter
- Backdraft Damper (Model WD-330)
- Neoprene Hanging Isolation Kit



Dimensional Data

Model	A	B Sq	C	D	Damper
BSQ-140	22"	23"	19 7/8"	12 1/2"	20"x20"
BSQ-160	26"	26"	22 7/8"	13 3/8"	23"x23"
*D dimension may be greater depending on motor					

Performance & Pricing Data

Model	HP	RPM	TS	Max HP	Pressure in inches WG						Fan List Price	Damper List Price
						0.125	0.25	0.5	0.75	1		
BSQ-140	1/2	1271	4845	0.43	CFM	2311	2217	2006	1741	1199	\$1664.00	\$189.00
					Sones	13.3	13.0	13.1	13.0	12.7		
		1356	5169	0.52	CFM	2476	2392	2197	1979	1636		
					Sones	14.2	13.9	13.8	13.8	13.8		
BSQ-160	1/2	1101	4826	0.52	CFM	3061	2665	2301			\$1963.00	\$230.00
					Sones	12.4	11.4	11.2				

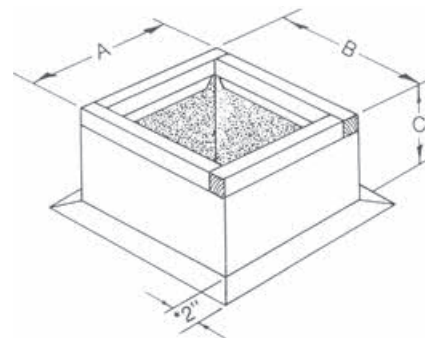


Creative Metals CSSF

Surface Mount Roof Curbs

Stock Notes

- Flush treated wood nailers
- Unitized construction
- 18 gauge galvanized steel construction
- 1 1/2" thick, 3 lb. density fiberglass insulation
- 2" flashing strip
- Inside dimensions are 3" less than outside dimensions



Curb Size	Dimensions A x B x C	List Price	Stock Fan Sizes			
14	12" x 12" x 16"	\$107.00	PP-1 and PP-4			
15	13.5" x 13.5" x 16"	\$134.00	RCC-7			
17	15.5" x 15.5" x 16"	\$134.00	G65 - G95			
19	17.5" x 17.5" x 16"	\$134.00	GVG-99, 123	CUEVG-101		GRS-8 - GRS-10-19
22	20.5" x 20.5" x 16"	\$155.00	GVG-143	CUEVG-141	CUBE-161	GRS-12 - GRS-15-22
24	22.5" x 22.5" x 16"	\$170.00				
26	24.5" x 24.5" x 16"	\$184.00				GRS-18
30	28.5" x 28.5" x 16"	\$212.00		GB-180		GRS-30
32	30.5" x 30.5" x 16"	\$226.00				GRS-24
34	32.5" x 32.5" x 16"	\$241.00				GRS-34
36	34.5" x 34.5" x 16"	\$254.00				
40	38.5" x 38.5" x 16"	\$282.00				

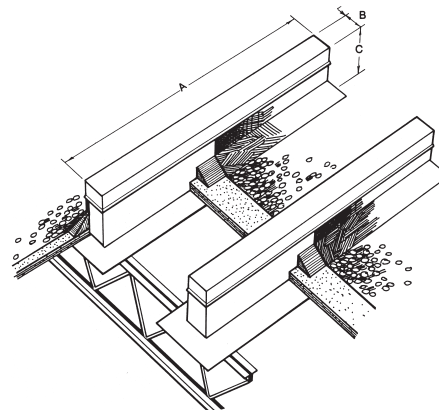
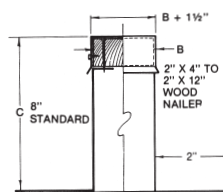
Creative Metals ESSSF

Equipment Rails

Stock Notes

- Surface mount
- Wood nailer
- Galvanized construction

A x B x C	List Price
48" x 4" x 16"	\$255.00
72" x 4" x 16"	\$383.00



Creative Metals PP

Pipe Penetration Cap

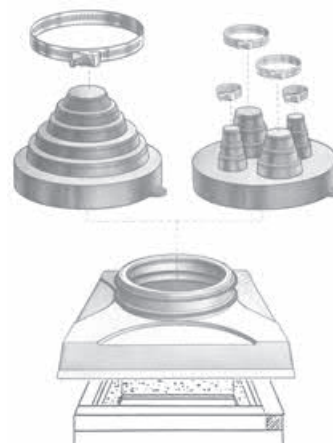
Stock Notes

- EPDM rubber caps
- Acrylic coated ABS plastic curb cap
- Stainless steel clamps
- 12" x 12" Curb sold separately

Model	Style	List Price
PP-1	One 2" to 6" Pipe	\$156.00
PP-4	Two 3/8" to 1" Pipes Two 1" to 2" Pipes	\$156.00

Model PP-1

Model PP-4

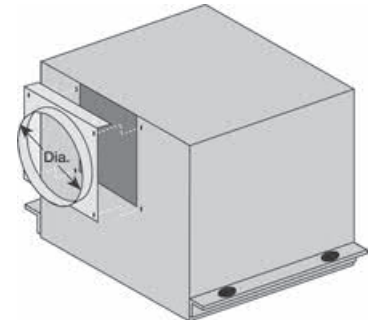


Greenheck RDC

Round Duct Connectors

Stock Notes

- Replaces the standard square discharge duct connector and damper.
- Uses existing mounting holes
- Galvanized steel construction



Model	For use with SP/CSP fans	Dia.	List Price
RDC-6	A110-A190	6"	\$33.00
RDC-8	A200-A510	8"	\$43.00

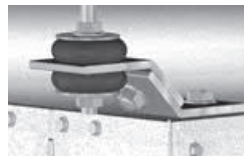
- Does NOT include a damper

Greenheck VI Kit

Neoprene Hanging Isolation Kit

Model	Fan	List Price
VI Kit	SP/CSP	\$45.00
VIKITBSQ	BSQ	\$197.00

BSQ



SP/CSP

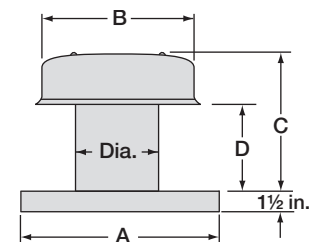


Greenheck RCC-7

Roof Cap

Stock Notes

- Weathertight aluminum construction
- Integral birdscreen
- Curb must be used with supplied built-in curb cap



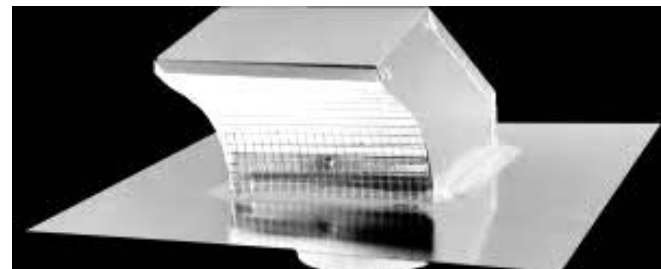
Model	For use with SP/CSP fans	A	B	C	D	Throat	List Price
RCC-7	B50~200 A50~390	15"	12"	10"	6 3/8"	7"	\$172.00

Model RJ

Pitched Roof Cap

Stock Notes

- Steel construction with black enamel finish
- Integral flashing flange
- Built-in birdscreen and damper



Model	List Price
RJ-6x9	\$82.00
RJ-10x10	\$185.00

Model WC

Round Hooded Wall Cap

Stock Notes

- Aluminum construction
- For outside wall applications
- Built-in reversible damper for intake/exhaust applications
- Built-in birdscreen

Model	List Price
WC-4	\$36.00
WC-6	\$41.00
WC-8	\$48.00
WC-10	\$56.00
WC-12	\$62.00

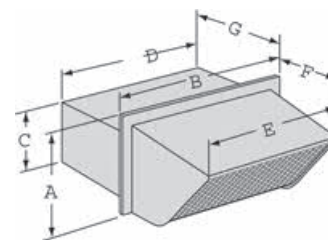


Square Hooded Wall Cap

Stock Notes

- Steel construction with black enamel finish
- For outside wall applications
- Built-in damper and birdscreen

Model	A	B	C	D	E	F	G	List Price
WC-8x8	10 1/4"	10 1/4"	8 1/4"	8 1/4"	8 1/4"	6 3/4"	5"	\$95.00



Model DRC

Wide Mouth Dryer Wall Cap

Stock Notes

- Built-in damper and birdscreen
- Constructed of Aluminum

Model	Neck	List Price
DRC04	4"	\$43.00



Columbus Electric ETD5STS

Line Voltage Thermostat

Stock Notes

- White color
- 50°-90° F Range
- Heating or Cooling
- 22 Amp, SPDT

Model	List Price
ETD5STS	\$40.00



Columbus Electric CKTD110

Line Voltage Thermostat

Stock Notes

- Capillary Coil
- 40°-110° F Range
- Heating or Cooling
- 22 Amp, SPDT

Model	List Price
CKTD110	\$113.00



Greenheck 5W and 10W

Speed Controllers

Stock Notes

- 5W - Applications up to 5 amps. Requires a 2 x 4 handy box by others.
- 10W - Applications up to 10 amps. Requires a 4 x 4 handy box by others.
- Speed controls can operate more than one fan as long as the total amperage of the fans does not exceed the control rating.

Model	Used w/ Model	List Price
SC5W	SP(CSP)B70-SP(CSP)A900 & G65-95	\$97.00
SC10W	SP(CSP)A150-SP(CSP)A1410	\$187.00





BAS Starter

Building Automation Starter

Stock Notes

- Wide-range adjustable electronic overload
- UL Listed
- HOA Keypad with LED indicators
- Damper interlock capability
- BAS Compatible
- Fireman's Override
- NEMA - 1 Enclosure
- Available with combination disconnect



Standard Starter



Combination Starter
with Disconnect

Performance & Pricing Data

Model	Single Phase		Three Phase			Nema Size	List Price-Starter Only	List Price-Starter with Disconnect
	120V	230V	208V	230V	460V			
BAS1-9	-	0.5 HP	1 HP	1 HP	3 HP	00	\$705.00	\$1022.00
BAS1-18	1 HP	3 HP	5 HP	5 HP	10 HP	0	\$751.00	\$1051.00
BAS1-32	2 HP	5 HP	7.5 HP	10 HP	20 HP	1	\$799.00	\$1161.00

* Maximum possible HP rating is shown

BAS-1P Starter

Universal 1 HP Starter

Stock Notes

- Wide-range electronic overload
- UL Listed
- Concealed HOA
- System Override
- NEMA - 1 Enclosure

Model	List Price
BAS-1P	\$222.00



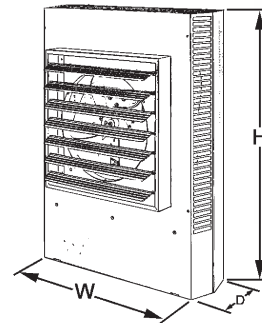
Markel 5100

Fan Forced Suspended Unit Heater

Model 5100 Fan Forced Suspended Unit Heaters are designed for horizontal or vertical mounted applications. They feature a powder coated, 18 ga. steel cabinet with a spiral fin steel element. All heaters are equipped with totally enclosed, permanently lubricated and thermally protected motors.

Stock Notes

- Powder coated 18 ga. steel cabinet
- Horizontal or vertical mount
- Automatic reset type limit switch for overheat protection
- Fan over-ride to purge residual heat at end of cycle



Available Accessories

Model	Description	List Price
UHA5105	3.5KW - 5.0KW Hanging Bracket	\$88.00
UHA5120	7.5KW - 20KW Hanging Bracket	\$107.00
UHDSC403	40 AMP Unit Heater Disconnect	\$257.00
UHDSC603	60 AMP Unit Heater Disconnect	\$402.00
UHT5100	5100 Unit Heater Thermostat	\$110.00

Dimensional Data

KW Rating	H	W	D
3.7KW - 5.0KW	17 3/4"	14 15/32"	6 1/2"
5.6KW - 10KW	24 5/16"	21 1/2"	6 1/2"

Performance & Pricing Data

Model	KW	BTU	Volts	Phase	Amps	Temp Rise	Air Throw	CFM	List Price
UH050240	3.7	12.8	208	1 / 3	12.1 / 10.4	40°	12'	400	\$659.00
	5.0	17.1	240	1 / 3	20.8 / 18.1				
UH050480	5.0	17.1	480	3	6.1	40°	12'	400	\$872.00
UH075240	5.6	19.2	208	1 / 3	31.3 / 27.1	34°	22'	700	\$1016.00
	7.5	25.6	240	1 / 3	27.1 / 31.3				
UH075480	7.5	25.6	480	3	9.1	34°	22'	700	\$1096.00
UH100208	9.9	33.8	208	1 / 3	47.8 / 27.4	45°	22'	700	\$1120.00
UH100240	7.5	25.6	208	1 / 3	36.1 / 20.8	45°	22'	700	\$1120.00
	10.0	34.1	240	1 / 3	41.2 / 24.0				
UH100480	10.0	34.1	480	3	12.1	45°	22'	700	\$1161.00



Markel 3320

Fan Forced Wall Heater

Model 3320 Fan Forced Wall Heaters feature a powder coated, 18 gauge steel grill with an extruded aluminum front frame and a steel block fin element. Fan features a vane axial blade and a 600 RPM motor.

Stock Notes

- Built-in tamper proof thermostat (55 ~ 85 deg. F)
- Disconnect switch
- Automatic reset thermal limit
- Automatic fan delay circuit
- Rough-in dimensions: 14 3/16" Wide x 19 15/16" High x 4" Deep
- Grill Dimensions: 15 29/32" Wide x 20 27/32" High



Available Accessories

Model	Description	List Price
WHBOX	Additional Rough-In Box	\$90.00
WHEX	Semi-Recess Frame	\$70.00
WHSF	Surface Mount Frame	\$82.00

Performance & Pricing Data

Model	KW	BTU	Volts	Amps	CFM	List Price
WH3324	1.5	5.1	208/240	7.2	175	\$590.00
	2.0	6.3		8.3		
WH3325	2.25	7.8	208/240	10.8		\$590.00
	3.0	10.4		12.5		
WH3326	3.0	10.4	208/240	14.4		\$590.00
	4.0	13.8		16.7		

Model	KW	BTU	Volts	Amps	CFM	List Price
WHF3323	1.5	5.1	120/1	12.5	175	\$581.00
WHF3324	2.0	6.3	277	7.2		\$589.00
WHG3325	3.0	10.4	277	10.8		\$589.00
WHG3326	4.0	13.8	277	14.4		\$589.00

Markel 3480

Fan Forced Ceiling Heater

Model 3408 Fan Forced Ceiling Heater feature powder coated, 20Ga. steel grill and enclosed steel fin sheath element. Fan features a vane axial blade with 1300 rpm motor.

Stock Notes

- Manual thermal reset
- Built-in double pole thermostat and disconnect switch
- Rough in dimensions 23 1/16"sq x 9 1/8" deep

Available Accessories

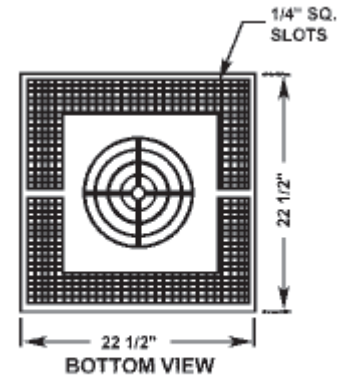
- Recess Frame

Available Accessories

Model	Description	List Price
CHRF	Recess Frame	\$122.00

Performance & Pricing Data

Model	KW	BTU	Volts	Amps	CFM	List Price
CHF3483	3	10200	208/1	14.4	425	\$1400.00
CHH3483	3	10200	240/1	12.5		
CHG3483	3	10200	277/1	10.8		





Lennox TUA Gas Heaters

45,000 - 390,000 BTUH Unit Heaters

Model TUA Natural/LP gas fired unit heaters with separated combustion air unit with up to 82% thermal efficiency. The compact cabinet design comes completely assembled 115/60/1 units with factory wired controls for easy installation. Simple-to-install units feature aluminized heat exchange, mounting spotnuts and externally located connections for gas, line voltage and thermostats.

Available Accessories

- Thermostat
- LP/Propane gas conversion kits
- Horizontal Vent Kits
- Air Intake Tee
- Vertical Vent/Air Intake Termination Cap



Performance & Pricing Data

Model	Input BTUH	Output BTUH	Thermal Eff. Nat. Gas	Connection			FAN DATA			Price
				Flue Size	Combustion Air Size	Gas Piping Size	CFM	HP	FLA	
TUA-045	45000	36200	81%	3"	3"	1/2"	750	1/20	1.7	\$1770.00
TUA-100	100000	81000	81%	5"	4"	1/2"	2435	1/8	2.7	\$2507.50
TUA-125	125000	101500	81%	5"	4"	1/2"	2435	1/8	2.7	\$2708.00
TUA-150	150000	120000	80%	5"	4"	1/2"	2955	1/8	2.7	\$3039.00
TUA-240	240000	194400	81%	5"	4"	3/4"	5215	1/8	2.7	\$3997.50
TUA-300	300000	240000	80%	6"	4"	3/4"	5215	1/8	2.7	\$4244.50



Lennox LF Gas Heaters

30,000 - 390,000 BTUH Unit Heaters

Model LF Natural/LP gas fired unit heaters with up to 82% thermal efficiency. Completely assembled 115/60/1 units with factory wired controls for easy installation. Simple-to-install units feature either mounting brackets or spotnuts for mounting ease and centrally located connections for gas, line voltage and thermostats.

Available Accessories

- Thermostat
- LP/Propane gas conversion kits
- Horizontal Vent Kits
- Discharge nozzels
- Hanging Brackets



Performance & Pricing Data

Model	Heat Exchanger Aluminized/ SS	Input BTUH	Output BTUH	Steady State Eff. Nat. Gas	Connection			FAN DATA			Price
					Vert Flue Size	Horiz Flue Size	Gas Piping Size	CFM	HP	FLA	
LF24-030	Aluminized	30000	24300	81.00%	3"a	4"c	1/2"	535	1/20	1.7	\$950.00
LF24-045	Aluminized	45000	36500	81.00%	3"a	4"c	1/2"	750	1/20	1.7	\$1023.00
LF24-060	Aluminized	60000	48000	80.00%	4"b	5" d	1/2"	830	1/8	4.1	\$1166.00
LF24-075	Aluminized	75000	60000	80.00%	4"b	5" d	1/2"	950	1/8	4.1	\$1244.00
LF24-100	Aluminized	100000	80500	80.50%	4"e		1/2"	1900	1/8	2.1	\$1302.00
LF24-100	SS	100000	80500	80.50%	4"e		1/2"	1900	1/8	2.1	\$1621.00
LF24-115	Aluminized	115000	92000	80.00%	4"e		1/2"	1900	1/8	2.1	\$1358.00
LF24-115	SS	115000	92000	80.00%	4"e		1/2"	1900	1/8	2.1	\$1687.00
LF24-145	Aluminized	145000	116000	80.00%	4"e		1/2"	1900	1/8	2.1	\$1402.00
LF24-145	SS	145000	116000	80.00%	4"e		1/2"	1900	1/8	2.1	\$1754.00
LF24-175	Aluminized	175000	138000	80.00%	5"f		1/2"	2200	1/8	2.1	\$1557.00
LF24-175	SS	175000	138000	80.00%	5"f		1/2"	2200	1/8	2.1	\$1950.00
LF24-200	Aluminized	195000	156000	80.00%	5"f		1/2"	2200	1/8	2.1	\$1801.00
LF24-200	SS	195000	156000	80.00%	5"f		1/2"	2200	1/8	2.1	\$2226.00
LF24-230	Aluminized	230000	184000	80.00%	5"f		3/4"	4400	1/8	2.1	\$2060.00
LF24-230	SS	230000	184000	80.00%	5"f		3/4"	4400	1/8	2.1	\$2495.00
LF24-250	Aluminized	250000	201250	80.50%	5"f		3/4"	4400	1/8	2.1	\$2194.00
LF24-250	SS	250000	201250	80.50%	5"f		3/4"	4400	1/8	2.1	\$2652.00
LF24-300	Aluminized	300000	241500	80.50%	5"f		3/4"	4400	1/8	2.1	\$2381.00
LF24-300	SS	300000	241500	80.50%	5"f		3/4"	4400	1/8	2.1	\$2996.00
LF24-345	Aluminized	345000	276000	80.00%	6"g		3/4"	4400	1/8	2.1	\$2722.00
LF24-345	SS	345000	276000	80.00%	6"g		3/4"	4400	1/8	2.1	\$3378.00
LF24-400	Aluminized	390000	312000	80.00%	6"g		3/4"	4400	1/8	2.1	\$2861.00
LF24-400	SS	390000	312000	80.00%	6"g		3/4"	4400	1/8	2.1	\$3672.00

Notes

- 2-1/8 x 3 In. diameter adapter is furnished w/ unit for flue connection
- 2 x 4 In. diameter adapter is furnished w/ unit for flue connection
- 3 x 4 In. Vent adapter required (not furnished) for horizontal venting in residential applications
- 4 x 5 In. Vent adapter required (not furnished) for horizontal venting in residential applications
- 2-1/8 x 4 In. diameter adapter is furnished w/ unit for flue connection
- 2-1/4 x 2-3/4 In. rectangular to 5" round adapter is furnished w/ unit for flue connection
- 2-1/4 x 2-3/4 In. rectangular to 6" round adapter is furnished w/ unit for flue connection

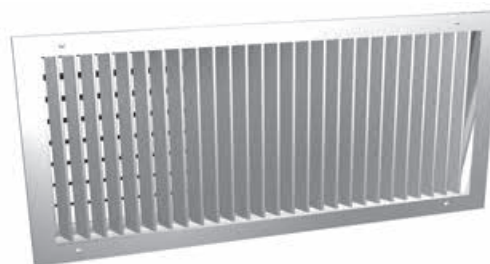
PRICE

Price 520D-F

520D-F Surface Mount Supply Register

Stock Notes:

- Steel construction
- Double deflection – 3/4" spacing
- Opposed blade damper included
- Blades individually adjustable
- Front blades parallel to short dimension
- Price B12 white powder coat finish



		WIDTH										
		6	8	10	12	14	16	18	20	24	30	36
H E I G H T	4	-	\$44.00	\$51.00	\$53.00	\$53.00	-	-	-	-	\$99.00	\$110.00
	6	\$51.00	\$51.00	\$51.00	\$55.00	\$62.00	\$66.00	\$73.00	\$75.00	\$82.00	\$113.00	\$130.00
	8	-	\$53.00	\$59.00	\$66.00	\$69.00	\$75.00	\$77.00	\$86.00	\$99.00	\$131.00	\$146.00
	10	-	-	\$62.00	\$71.00	\$77.00	\$82.00	\$88.00	\$93.00	\$110.00	\$142.00	\$168.00
	12	-	-	-	\$75.00	\$80.00	\$91.00	\$99.00	\$104.00	\$121.00	\$162.00	\$184.00
	14	-	-	-	-	\$91.00	-	-	-	-	-	-
	16	-	-	-	-	-	\$115.00	\$124.00	-	\$146.00	\$203.00	\$228.00
	18	-	-	-	-	-	-	-	-	\$162.00	\$217.00	\$255.00

Price 530-F / 530-FF

530-F Surface Mount Return Grille

Stock Notes:

- Steel construction
- 45 degree deflection – 3/4" spacing
- Fixed louvered face
- Price B12 white powder coat finish



		WIDTH											
		6	8	10	12	14	16	18	20	22	24	30	36
H E I G H T	4	\$27.00	\$27.00	\$27.00	\$27.00	-	-	-	-	-	-	-	-
	6	\$27.00	\$27.00	\$27.00	\$31.00	\$31.00	\$36.00	\$38.00	\$40.00	-	\$44.00	\$53.00	\$58.00
	8	-	\$27.00	\$31.00	\$31.00	\$36.00	\$38.00	\$42.00	\$44.00	-	\$47.00	\$58.00	\$62.00
	10	-	-	\$36.00	\$36.00	\$38.00	\$42.00	\$44.00	\$44.00	\$47.00 ¹	\$49.00	\$60.00	\$69.00
	12	-	-	-	\$38.00	\$42.00	\$44.00	\$47.00	\$49.00	-	\$51.00	\$65.00	\$73.00
	14	-	-	-	-	\$44.00	-	\$49.00	\$51.00	-	-	\$71.00	-
	16	-	-	-	-	-	\$49.00	\$53.00	\$55.00	-	\$60.00	\$74.00	-
	18	-	-	-	-	-	-	\$54.00	\$60.00	-	\$62.00	\$80.00	\$96.00
	20	-	-	-	-	-	-	-	\$60.00	-	-	-	-
	22	-	-	-	-	-	-	-	-	\$69.00 ¹	-	-	-
	24	-	-	-	-	-	-	-	-	-	\$74.00	-	\$107.00

¹ Indicated sizes are lay-in style-- no screw holes

530-FF Lay-in Return Filter Grille

Stock Notes:

- Same as above plus a 1" filter frame
- Lay-in ONLY

Size	Filter Size	List Price
24" x 24"	20" x 20"	\$118.00

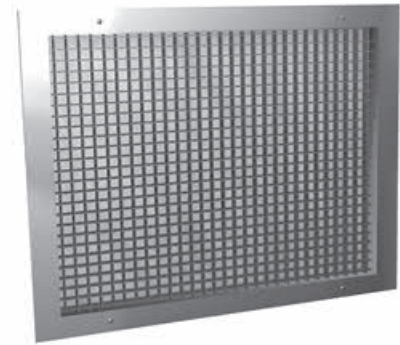
Price 80-F

80-F Surface Mount Eggcrate Return Grilles

Stock Notes:

- Aluminum frame
- 1/2" x 1/2" x 1/2" aluminum core
- Price B12 white powder coat finish

H E I G H T	WIDTH							
	6	8	10	12	14	16	18	24
6	\$17.00	-	-	-	-	-	-	-
8	-	\$21.00	-	-	-	-	-	-
10	-	-	\$25.00	-	-	-	-	-
12	-	-	-	\$29.00	-	-	-	-
14	-	-	-	-	\$37.00	-	-	-
16	-	-	-	-	-	\$42.00	-	-
18	-	-	-	-	-	-	\$50.00	-
24	-	-	-	-	-	-	-	\$75.00



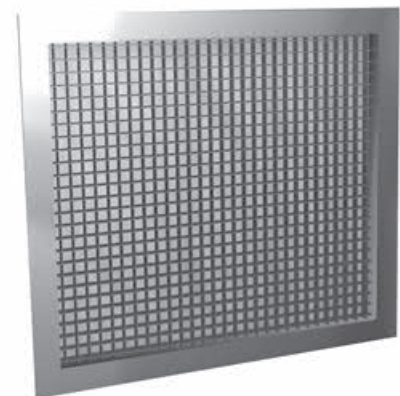
Price 80-TB

80-TB Lay-in Eggcrate Return Grilles

Stock Notes:

- Aluminum frame
- 1/2" x 1/2" x 1/2" aluminum core
- Price B12 white powder coat finish

Duct Size	Module Size	List Price
22" x 10"	24" x 12"	\$39.00
22" x 22"	24" x 24"	\$66.00
46" x 22"	48" x 24"	\$142.00



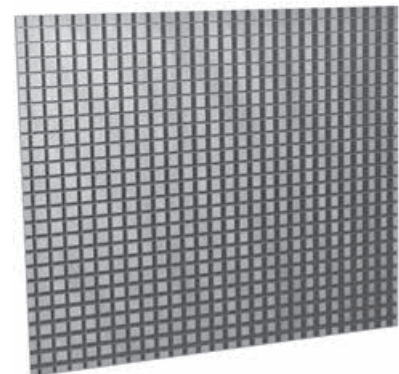
Price 80-CORE

80-CORE Lay-in Eggcrate Core Only

Stock Notes:

- 1/2" x 1/2" x 1/2" aluminum core
- Price B12 white powder coat finish

Nominal Size	List Price
24" x 12"	\$21.00
24" x 24"	\$42.00
48" x 24"	\$88.00



PRICE

Price SCD

Lay-in Square Cone Ceiling Diffuser

Stock Notes:

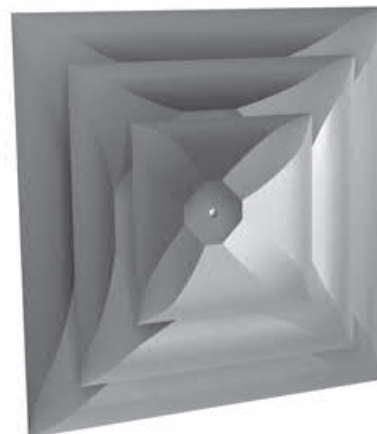
- Steel construction
- 360 degree *fixed* air pattern
- Price B12 white powder coat finish

Available Accessories:

- AMF mounting frame for surface mount applications
- VCR dampers

Duct Size	Module Size	List Price
6"	12" x 12"	\$45.00
8"	12" x 12"	\$45.00

6"	24" x 24"	\$54.00
8"	24" x 24"	\$54.00
10"	24" x 24"	\$54.00
12"	24" x 24"	\$54.00
14"	24" x 24"	\$54.00



Price SCDA

Lay-in Square Cone Adjustable Ceiling Diffuser

Stock Notes:

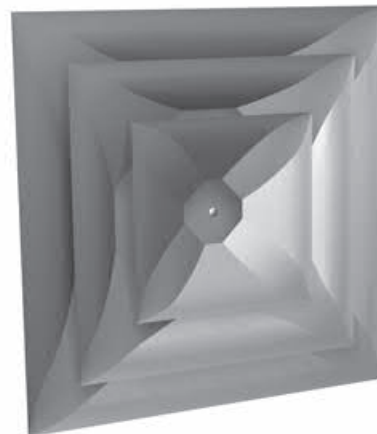
- Steel construction
- 360 degree *adjustable* air pattern
- Price B12 white powder coat finish

Available Accessories:

- AMF mounting frame for surface mount applications
- VCR dampers

Duct Size	Module Size	List Price
6"	12" x 12"	\$61.00
8"	12" x 12"	\$61.00

6"	24" x 24"	\$75.00
8"	24" x 24"	\$75.00
10"	24" x 24"	\$75.00
12"	24" x 24"	\$75.00
14"	24" x 24"	\$75.00



Price SPD

Lay-in Architectural Square Plaque Diffuser

Stock Notes:

- Steel construction
- 360 degree horizontal air pattern
- Price B12 white powder coat finish

Available Accessories:

- Directional blow clips for pattern control
- AMF mounting frame for surface mount applications
- VCR dampers

Duct Size	Module Size	List Price
6"	12" x 12"	\$54.00
8"	12" x 12"	\$54.00

6"	24" x 24"	\$68.00
8"	24" x 24"	\$68.00
10"	24" x 24"	\$68.00
12"	24" x 24"	\$68.00
14"	24" x 24"	\$68.00



Price SMD

Louvered Face Diffuser

Stock Notes:

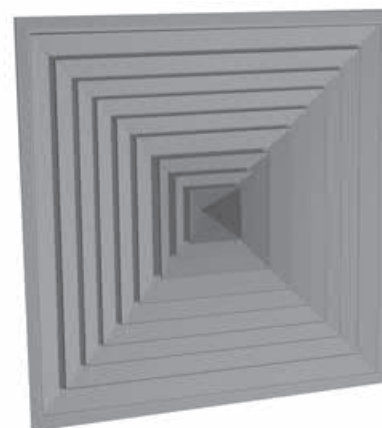
- Steel construction
- Louvered face 4-way fixed discharge
- Price B12 white powder coat finish

Available Accessories:

- VCS-3 damper
- Square to round adaptor

LAY-IN

Duct Size	Module Size	List Price
15" x 15"	24" x 24"	\$100.00



PRICE

Price LCMD

Surface Mount Louvered Face Diffuser

Stock Notes:

- Extruded Aluminum Construction
- Bevelled Frame with Fastening Holes
- Removable Core
- Louvered face fixed discharge
- Price B12 white powder coat finish

Available Accessories:

- VCS-3 Damper
- Square to Round Adaptor

Duct Size	List Price
6" x 6"	\$36.00
8" x 8"	\$37.00
10" x 10"	\$51.00
12" x 12"	\$59.00
14" x 14"	\$65.00



Price Varitherm HC

Thermally Powered VAV Diffuser

The Price Varitherm uses thermal actuators and an integral damper to vary the flow of conditioned air into the occupied space. The unit features individual set points for heating and cooling and automatic heating / cooling changeover. This allows year-round comfort without constant adjustments. All necessary settings are easily accessible through the securely hinged plaque face.

Stock Notes:

- Individual VAV control for heating and cooling
- Requires no power or wiring
- Automatic heating / cooling changeover
- All controls easily accessible from room
- Identical look to Price SPD Diffuser
- Price B12 white powder coat finish

Duct Size	Module Size	List Price
6"	24" x 24"	\$724.00
8"	24" x 24"	\$724.00
10"	24" x 24"	\$724.00
12"	24" x 24"	\$724.00



Price SDG

Spiral Mounted Registers

Model SDG spiral mounted registers are manufactured from galvanized sheet steel and feature adjustable double deflection blades and a volume damper. Unit is designed to be mounted directly on spiral duct without the need for a rectangular register tap. Gasketing material is used around the neck of the register to prevent air leakage.



Size (inches)	Duct Size (inches)	Performance at 800 FPM					List Price
		CFM	NC @ 0°	Throw 0°	Throw 22°	Throw 45°	
14x4	8-13	240	22	15-21-29	12-17-23	7-10-15	\$103.00
14x6	14-21	368	24	18-26-36	15-20-29	9-13-18	\$110.00
18x4	8-13	312	23	17-24-33	13-19-27	8-12-17	\$113.00
18x6	14-21	480	25	21-29-41	17-23-33	10-15-21	\$122.00
18x10	32-41	856	28	28-39-55	22-31-44	14-20-28	\$132.00
22x4	8-13	383	24	19-26-37	15-21-30	9-13-18	\$133.00
22x6	14-21	648	26	24-34-48	19-27-38	12-17-24	\$151.00
24x4	8-13	480	25	21-29-41	17-23-33	10-15-21	\$133.00
24x6	14-21	678	26	25-35-49	20-28-39	12-17-25	\$151.00
24x8	22-31	944	28	29-41-58	23-33-46	15-20-29	\$159.00
36x6	14-21	1028	28	30-43-60	24-34-48	15-21-30	\$187.00
36x8	22-31	1440	30	36-51-72	29-40-57	18-25-36	\$210.00

Price RCDE

Round Ceiling Diffuser

Stock Notes:

- Steel construction
- 360 degree air pattern
- Two horizontal discharge patterns
- Price B12 white powder coat finish

Available Accessories:

- VCR-8E damper

Duct Size	Outside Diameter	List Price
6"	11 1/8"	\$92.00
8"	14 3/4"	\$97.00
10"	18 1/4"	\$106.00
12"	22"	\$117.00
14"	26"	\$135.00



PRICE

Price PDF

Square Perforated Supply Diffuser

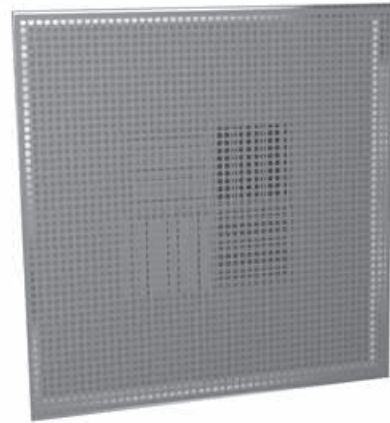
Stock Notes:

- Steel construction
- 1, 2, 3 or 4-way horizontal pattern
- Round neck
- Flush face
- Price B12 white powder coat finish

Available Accessories:

- AMF mounting frame for surface mount applications
- VCR dampers

Duct Size	Module Size	List Price
6"	24" x 24"	\$50.00
8"	24" x 24"	\$50.00
10"	24" x 24"	\$50.00
12"	24" x 24"	\$50.00
14"	24" x 24"	\$50.00



Price PDC

Square Perforated Supply Diffuser

Stock Notes:

- Steel construction
- Curved blades
- Round neck
- Flush face
- Price B12 white powder coat finish

Available Accessories:

- AMF mounting frame for surface mount applications

Duct Size	Module Size	List Price
6"	24" x 24"	\$62.00
8"	24" x 24"	\$62.00
10"	24" x 24"	\$69.00



Price PDDR

Square Perforated Return Diffuser

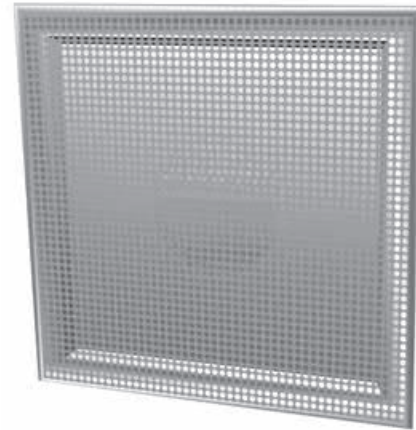
Stock Notes:

- Steel construction
- Square neck
- Flush face
- Price B12 white powder coat finish

Available Accessories:

- AMF mounting frame for surface mount applications
- VCS-3 damper

Duct Size	Module Size	List Price
22" x 22"	24" x 24"	\$44.00



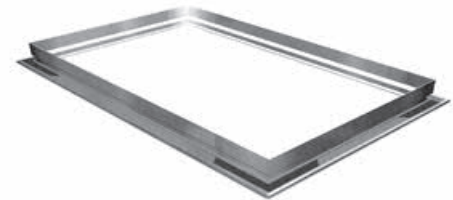
Price AMF

Aluminum Mounting Frame

Stock Notes:

- Aluminum construction
- For surface mounting applications with ceiling diffusers
- Price B12 white powder coat finish

Diffuser Size	Ceiling Opening	Overall Dimension	List Price
12" x 12"	12 1/2" x 12 1/2"	13 3/4" x 13 3/4"	\$43.00
24" x 12"	24 1/2" x 12 1/2"	25 3/4" x 13 3/4"	\$50.00
24" x 24"	24 1/2" x 24 1/2"	25 3/4" x 25 3/4"	\$53.00
48" x 24"	48 1/2" x 24 1/2"	49 3/4" x 25 3/4"	\$71.00



PRICE

Price TBD/TBDI

T-Bar Slot Diffuser

Stock Notes:

- Two Slot
- Adjustable pattern control
- Steel construction
- Available externally insulated
- Black exposed surfaces and white center t-bar



Available Accessories:

- Mounting frame for surface mount applications

Model	Insulated	Slot Width	Length	Height	Width	Inlet Size	List Price
TBDI	Y	1"	24"	8"	4"	6"	\$103.00
TBDI	Y	1"	48"	8"	4"	8"	\$131.00
TBDI	Y	1"	48"	8"	4"	10"	\$131.00
TBD	N	1"	24"	8"	4"	6"	\$72.00
TBD	N	1"	48"	8"	4"	8"	\$92.00
TBD	N	1"	48"	8"	4"	10"	\$92.00
TBD	N	1 1/2"	48"	11"	5"	12"	\$92.00

T-Bar Slot Diffuser with Center Notch

Stock Notes:

- Two Slot
- Adjustable pattern control
- Steel construction
- Available externally insulated
- Black exposed surfaces and white center t-bar
- Center notch for cross t-bar

Model	Insulated	Slot Width	Length	Height	Width	Inlet Size	List Price
TBDI-CN	Y	1"	48"	8"	4"	8"	\$150.00

Slot Diffuser Mounting Frame

Stock Notes:

- Used to install slot diffusers in sheetrock or plaster ceilings
- Extruded aluminum construction
- White finish

Size	List Price
For 2' / 6" Diffuser	\$27.00
For 4' / 8" - 10" Diffuser	\$42.00
For 4' / 12" Diffuser	\$42.00

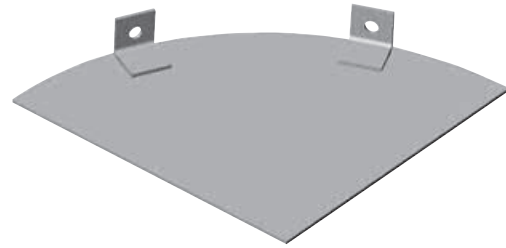
Price SB

Sectorizing Baffle

Stock Notes:

- Used to blank off portion of the diffuser inlet to create a special irregular air pattern
- Mounts in neck of diffuser
- Each baffle is a 45° piece

Neck Size	List Price
6"	\$15.00
8"	\$16.00
10"	\$16.00
12"	\$19.00
14"	\$19.00



Price DB

Directional Blow Clips

Stock Notes:

- Converts SPD diffuser to a 1, 2, or 3-way pattern
- Matches Price B12 white finish
- Clips to stand off rods of plaque for easy install

Size	List Price
12" x 12"	\$16.00
24" x 24"	\$24.00

PRICE

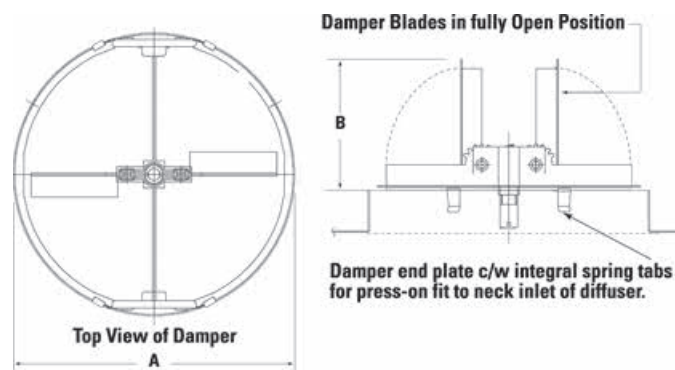
Price VCR-8E

Butterfly Control Damper

Stock Notes:

- Mounts in round neck ceiling diffusers
- Easily adjusted with slotted operator

Nominal Size	List Price
6"	\$17.00
8"	\$19.00
10"	\$19.00
12"	\$21.00
14"	\$31.00



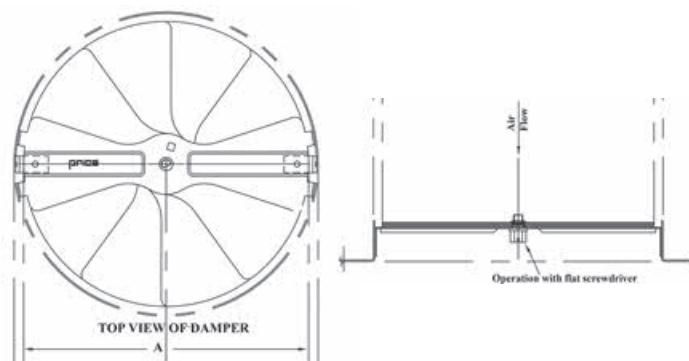
Price VCR-9

Radial Control Damper

Stock Notes:

- Mounts in round neck ceiling diffusers
- Easily adjusted with slotted operator

Nominal Size	List Price
6"	\$19.00
8"	\$21.00
10"	\$24.00
12"	\$26.00
14"	\$36.00



Price VCS-3

Opposed Blade Damper

Stock Notes:

- For square neck diffusers
- Steel construction

Nominal Size	List Price
6" x 6"	\$17.00
8" x 8"	\$24.00
9" x 9"	\$26.00
10" x 10"	\$26.00
12" x 12"	\$28.00
14" x 14"	\$35.00
15" x 15"	\$41.00
18" x 18"	\$46.00



Price Touch-Up Paint

Price B-12 White Finish Touch-up Paint

Size	List Price
1 Can	\$31.00

Price SPV

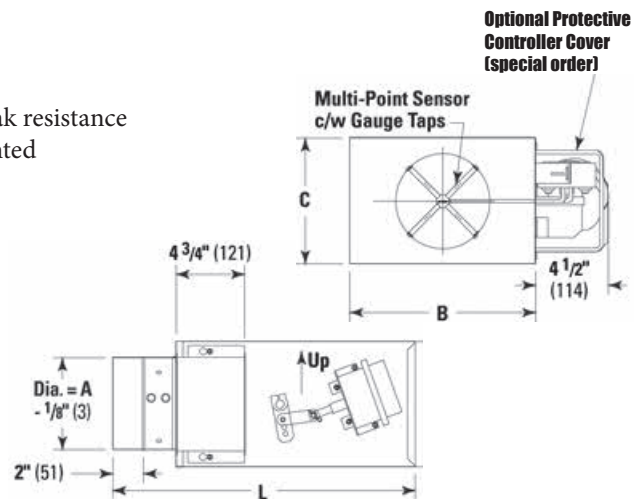
Pneumatic VAV Terminal Unit

Stock Notes:

- Zinc coated steel housing, sealed and gasketed for leak resistance
- Pneumatic controls and actuator provided and mounted
- Price SP200 Velocity Pressure Sensor
- Flow logic analyzer
- 3/4" Price Fiber Free Foam liner or Solid Metal liner
- Pressure independent
- DA-NO/NC and RA-NO/NC
- Does not include room thermostat
- Field calibration required
- 1008 control sequence

Available Accessories:

- Hot water coil



Unit Size	CFM Min.	CFM Max.	Inlet (A)	Outlet (B)	Outlet (C)	Length (L)	Fiber Free List Price	Solid Metal List Price
6	66	450	6"	12"	8"	20 1/8"	\$745.00	\$758.00
8	132	800	8"	12"	10"	20 1/8"	\$792.00	\$792.00
10	221	1350	10"	14"	12 1/2"	20 1/8"	\$815.00	\$836.00
12	304	2100	12"	16"	15"	20 1/8"	\$872.00	\$872.00
14	439	3000	14"	20"	17 1/2"	23 5/8"	\$937.00	\$963.00

Price SDV

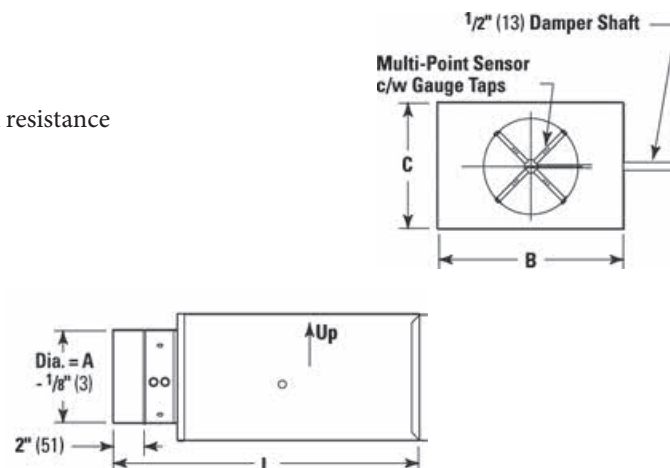
DDC VAV Terminal Unit

Stock Notes:

- Zinc coated steel housing, sealed and gasketed for leak resistance
- Controls and actuator by others
- Sheet metal enclosure included
- Price SP200 Velocity Pressure Sensor
- Flow logic analyzer
- 3/4" Price Fiber Free Foam liner or Solid Metal liner

Available Accessories:

- 120/24 volt transformer
- Hot water coil



Unit Size	CFM Min.	CFM Max.	Inlet (A)	Outlet (B)	Outlet (C)	Length (L)	Fiber Free List Price	Solid Metal List Price
6	66	450	6"	12"	8"	20 1/8"	\$406.00	\$419.00
8	132	800	8"	12"	10"	20 1/8"	\$482.00	\$482.00
10	221	1350	10"	14"	12 1/2"	20 1/8"	\$510.00	\$529.00
12	304	2100	12"	16"	15"	20 1/8"	\$547.00	\$547.00
14	439	3000	14"	20"	17 1/2"	23 5/8"	\$672.00	\$698.00

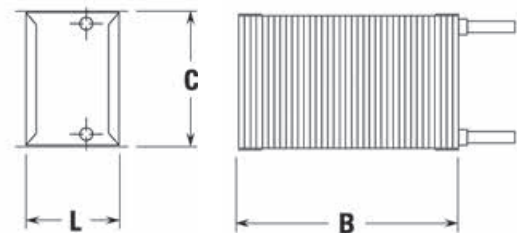
PRICE

Price Water Coil

High-Capacity Hot Water Reheat Coil

Stock Notes:

- Two row, high capacity coil
- Used on SPV and SDV terminal units
- Water connections are 7/8" OD male solder



VAV Unit Size	B	C	L	List Price
6	12"	8"	5"	\$264.00
8	12"	10"	5"	\$277.00
10	14"	12 1/2"	5"	\$337.00
12	16"	15"	5"	\$407.00
14	20"	17 1/2"	5"	\$545.00

Price CP101 Controller

Replacement Pneumatic Controller

Stock Notes:

- Accommodates direct and reverse acting thermostats
- Accommodates normally open or normally closed damper position

Model	List Price
CP101	\$257.00

Price Actuator

Replacement Pneumatic Actuator

Model	List Price
PNACT	\$131.00

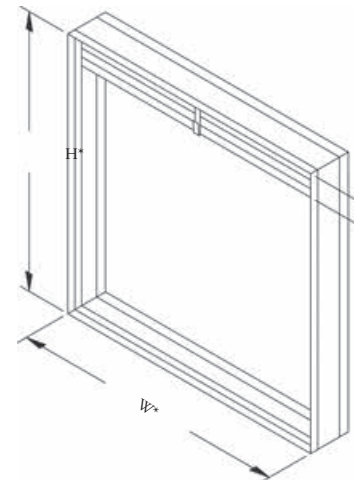
Greenheck Model FD-150

Static Fire Damper

Stock Notes:

- UL 555 Classified
- Type A curtain (blades in airstream)
- Vertical or horizontal installation
- Spring loaded
- 165 degree fusible link
- Galvanized steel construction
- Mill finish

Size (A x B)	List Price
6" x 6"	\$36.00
8" x 8"	\$40.00
10" x 10"	\$44.00
12" x 12"	\$47.00
24" x 12"	\$70.00
20" x 20"	\$80.00
24" x 24"	\$96.00



* Dimensions are furnished approximately 1/4" undersize.

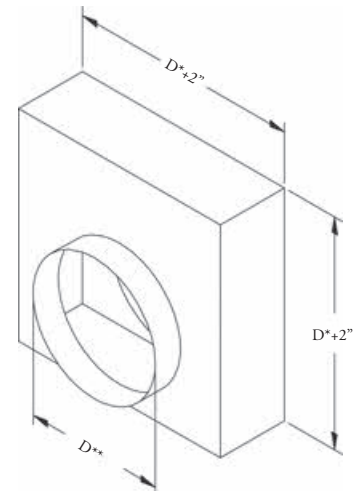
Greenheck Model FD-150-R

Static Fire Damper

Stock Notes:

- Round duct connection
- UL 555 Classified
- Type R curtain (high free area)
- Vertical or horizontal installation
- Spring loaded
- 165 degree fusible link
- Galvanized steel construction
- Mill finish

Diameter (D)	List Price
6"	\$123.00
8"	\$128.00
10"	\$130.00
12"	\$151.00
14"	\$151.00



* Dimensions are furnished approximately 1/4" undersize.

** Dimension is furnished approximately 1/8" undersize.

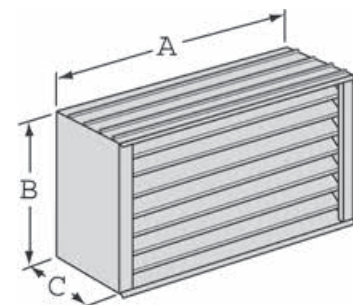
Greenheck BVE-157

Brick Vent

Stock Notes:

- Extruded aluminum construction
- Heavy gauge 4" deep frame
- Includes insect screen
- Clear anodized finish

A	B	C	List Price
15 5/8"	7 3/4"	4	\$184.00





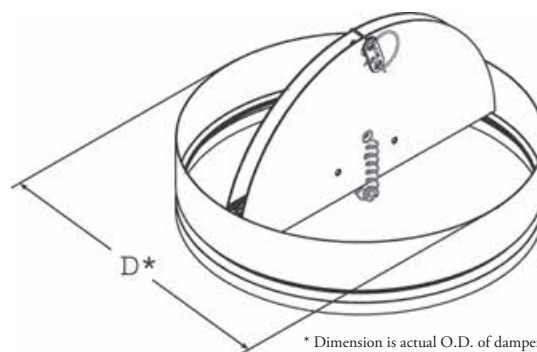
Greenheck Model CRD-2

Ceiling Radiation Fire Damper

Stock Notes:

- UL 555 Classified
- 165 degree fusible link
- Galvanized steel construction
- Mill finish

Diameter (D)	List Price
6"	\$49.00
8"	\$54.00
10"	\$59.00
12"	\$85.00
14"	\$93.00



Greenheck Model TIB

Thermal Insulating Blanket

Stock Notes:

- Quilted ceramic fiber blanket
- Required for use with CRD-2 and 24" x 24" diffusers for U.L. fire rated ceilings

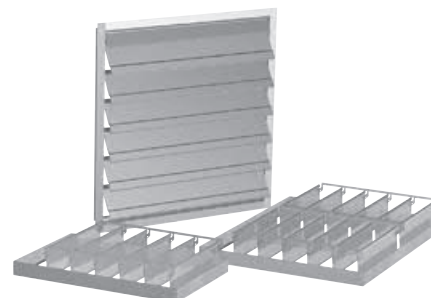
Module Size	List Price
24" x 24"	\$36.00

Greenheck WD

Automatic Backdraft Dampers

Stock Notes

- Heavy gauge galvanized steel frame
- Aluminum blades with felt seals and nylon bushings
- Pre-punched holes for easy installation
- WD-100 dampers are designed for roof mounted applications
- WD-330 are designed for duct applications
- Motor packs (115, 230 and 460 volt) can be ordered from the factory
- Dampers are for relatively clean air applications ONLY



Dimensions W x L	Stock Fan Sizes					List Price
WD-100						
8" x 8"		G-65			GRS-8	\$83.00
10" x 10"		G-80, 90, 95			GRS-10	\$90.00
12" x 12"		GVG-99, 123	CUEVG-101		GRS-12	\$94.00
16" x 16"		GVG-143	CUEVG-141	CUBE-161	GRS-15	\$107.00
18" x 18"		GB-180			GRS-18	\$138.00
24" x 24"					GRS-24	\$149.00
WD-330						
20" x 20"	BSQ-140					\$189.00
23" x 23"	BSQ-160					\$230.00

EASTERN TIGHT








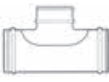


Spiral Pipe and Self-Sealing Fittings

Eastern Sheet Metal's EASTERN TIGHT fittings feature a superior triple-lipped EPDM rubber gasket held in place with a 180° hemmed edge. When inserted into the spiral duct, the gasket forms a seal against the inside of the spiral duct completely eliminating the need for any duct sealer!

EASTERN TIGHT fittings have been independently tested to meet SMACNA Class 3 leakage standards for -2" WG to +10" WG. All stock spiral duct and fittings are manufactured to 2005 SMACNA standards (see below for gauges)

2005 SMACNA 10" WG Positive

Diameter	Spiral Pipe Gauge	Fittings Gauge
3"-6"	26	26
7"-8"	26	26
9"-10"	26	26
11"-12"	26	26
13"-14"	26	26
15"-16"	26	26
17"-18"	26	26
19"-24"	26	24
25"-26"	24	22
27"-36"	24	22

	SP	E45T / E90T		PCPT / FCPT		PBT	CTOT	PTT	ECT	DT
										
Diameter	Spiral Pipe 10' Length	45° Elbow 1 1/2 Radius	90° Elbow 1 1/2 Radius	Pipe Coupling	Fitting Coupling	Take-Off	Take-Off	Tee (Non-Reducing)	End Cap	Manual Damper
3"	\$16.00	\$15.50	\$19.00	\$7.00	-	-	-	-	\$15.00	-
4"	\$21.00	\$14.00	\$18.00	\$8.00	\$2.00	\$11.00	-	-	\$11.00	\$32.00
5"	\$26.00	\$16.00	\$21.00	\$8.00	-	-	-	-	\$11.00	-
6"	\$31.00	\$18.00	\$26.00	\$8.00	\$3.00	\$13.00	-	\$37.00	\$13.00	\$39.00
7"	\$36.00	\$21.00	\$30.00	\$8.00	-	\$14.00	-	-	\$14.00	\$40.00
8"	\$41.00	\$24.00	\$35.00	\$8.00	\$3.00	\$14.00	-	\$44.00	\$14.00	\$42.00
9"	\$46.00	\$29.00	\$38.00	\$9.00	-	\$15.00	-	-	\$15.00	-
10"	\$51.00	\$31.00	\$48.00	\$9.00	\$4.00	\$17.00	-	\$52.00	\$17.00	\$49.00
12"	\$61.00	\$38.00	\$61.00	\$9.00	\$4.00	\$18.00	-	\$60.00	\$18.00	\$57.00
14"	\$70.00	\$49.00	\$82.00	\$11.00	\$5.00	-	\$28.00	\$54.00	\$32.00	\$72.00
16"	\$80.00	\$57.00	\$95.00	\$13.00	\$5.00	-	\$31.00	\$80.00	\$35.00	\$87.00
18"	\$90.00	\$68.00	\$119.00	\$16.00	\$6.00	-	\$34.00	\$72.00	\$41.00	\$95.00
20"	\$99.00	\$87.00	\$154.00	\$19.00	\$9.00	-	\$40.00	-	\$47.00	\$106.00
22"	\$109.00	\$99.00	\$177.00	\$21.00	\$9.00	-	\$43.00	-	\$52.00	\$117.00
24"	\$120.00	\$116.00	\$208.00	\$22.00	\$10.00	-	\$46.00	-	\$56.00	\$125.00
26"	\$161.00	\$140.00	\$253.00	\$23.00	\$9.00	-	-	-	-	-
28"	\$174.00	-	-	\$24.00	-	-	-	-	-	-
30"	\$185.00	-	-	\$26.00	-	-	-	-	-	-
32"	\$199.00	-	-	\$42.00	-	-	-	-	-	-
34"	\$210.00	-	-	\$44.00	-	-	-	-	-	-



Eastern Model RDT / RDBT

TIGHT Spiral Reducers

- RDT Reducers feature fitting gaskets on both ends.
- RDBT Reducers feature a fitting gasket on the smaller end.

D1	D2	RDT	RDBT
6"	4"	\$22.00	\$19.00
6"	5"	\$22.00	\$19.00
7"	6"	\$23.00	-
8"	5"	\$24.00	-
8"	6"	\$24.00	\$21.00
8"	7"	\$24.00	-
9"	8"	\$25.00	
10"	6"	\$26.00	\$24.00

D1	D2	RDT	RDBT
10"	8"	\$26.00	\$24.00
10"	9"	\$26.00	-
12"	8"	\$28.00	\$28.00
12"	10"	\$28.00	\$28.00
14"	8"	\$45.00	\$43.00
14"	10"	\$46.00	\$43.00
14"	12"	\$47.00	\$45.00
16"	8"	\$53.00	-

D1	D2	RDT	RDBT
16"	10"	\$51.00	\$48.00
16"	12"	\$51.00	\$48.00
16"	14"	\$53.00	\$52.00
18"	12"	\$59.00	\$55.00
18"	14"	\$59.00	\$55.00
18"	16"	\$59.00	\$58.00
20"	12"	\$69.00	-
20"	14"	\$69.00	\$63.00

D1	D2	RDT	RDBT
20"	16"	\$69.00	\$70.00
20"	18"	\$70.00	\$70.00
22"	16"	\$75.00	-
22"	18"	\$75.00	-
22"	20"	\$77.00	-
24"	18"	\$81.00	-
24"	20"	\$81.00	-
24"	22"	\$83.00	-

Eastern Model PFTCT

TIGHT 90° Spiral Saddle Tap







Tap Dia.	Main Dia.	Price
6"	6"	\$14.00
6"	7"-8"	\$14.00
6"	9"-10"	\$14.00
6"	12"-14"	\$14.00
6"	16"-18"	\$14.00
8"	8"	\$17.00
8"	9"-10"	\$17.00
8"	12"	\$17.00
8"	14"	\$17.00



Tap Dia.	Main Dia.	Price
8"	16"-18"	\$17.00
8"	20"-24"	\$17.00
10"	10"	\$18.00
10"	12"	\$18.00
10"	14"	\$18.00
10"	16"	\$18.00
10"	18"	\$18.00
10"	20"-24"	\$18.00
12"	12"	\$22.00

Tap Dia.	Main Dia.	Price
12"	14"	\$18.00
12"	16"	\$23.00
12"	18"	\$22.00
12"	20"-24"	\$22.00
14"	14"	\$28.00
14"	16"	\$28.00
14"	18"	\$28.00
14"	20"	\$28.00
14"	22"	\$28.00


Tap Dia.	Main Dia.	List Price
14"	24"	\$28.00
16"	16"	\$31.00
16"	18"	\$31.00
16"	20"	\$30.00
16"	22"	\$31.00
16"	24"	\$31.00
18"	20"	\$34.00
18"	22"	\$34.00
18"	24"	\$34.00



Snap-Lock Pipe and Fittings


	SNAP	ADJ90	DSM	ESM	TEE	ATD	CBD	STOD
						No Photo Available		
Dia.	26 gauge Snap-Lock Pipe 5' length	Adjustable 90° Elbow	Volume Damper	End Cap	Tee Non-Reducing	Peel-n-Stick Take-off with damper	Conical Bellmouth Take-off with damper	High-efficiency Take-off with damper
4"	\$15.00	\$8.00	-	-	\$17.50	-	-	-
6"	\$19.00	\$9.00	\$6.50	\$7.50	\$18.50	\$14.50	\$25.00	\$43.00
8"	\$25.00	\$12.00	\$7.50	\$8.50	\$24.00	\$16.50	\$29.50	\$51.00
10"	\$32.00	\$16.00	\$9.00	\$14.50	\$27.00	\$22.50	\$37.50	\$64.00
12"	\$36.00	\$19.00	\$10.00	\$16.00	\$30.00	\$28.50	\$43.50	\$72.00
14"	\$44.00	\$34.00	\$11.00	\$25.00	-	\$30.50	\$56.50	\$86.00
16"	-	\$41.00	-	-	-	\$34.00	\$75.00	\$99.00
18"	-	\$50.00	-	-	-	-	-	-
20"	-	\$59.00	-	-	-	-	-	-

	SC	SCND
		
	Tab-in Starting Collar with damper	Tab-in Starting Collar (no damper)
Diameter	List Price	List Price
6"	\$9.00	\$2.50
8"	\$11.50	\$3.00
10"	\$15.50	\$5.50
12"	\$19.50	\$6.50
14"	\$22.50	\$7.50
16"	\$25.00	-
18"	\$30.50	-

TSU		
		
Saddle Take-off with damper		
Tap Dia.	Main Dia.	List Price
6"	10" - 14"	\$18.00
8"	10" - 14"	\$22.50
10"	12" - 16"	\$28.50
12"	14" - 18"	\$31.50
14"	16" - 20"	\$32.00

STR		
		
Square to Round Transition		
Square Size	Round Sizes Available	List Price
6" x 6"	5"	\$15.00
6" x 6"	6"	\$15.00
8" x 8"	6", 8"	\$16.00
10" x 10"	6", 8", 10"	\$18.00
12" x 12"	6", 8", 10", 12"	\$19.00
14" x 14"	6", 8", 10", 12", 14"	\$22.50
15" x 15"	6", 8", 10", 12", 14"	\$24.00
20" x 20"	12", 14", 16"	\$34.00
22" x 10"	18", 20"	\$44.50
22" x 10"	6", 8", 10"	\$35.00
22" x 22"	6", 8", 10", 12", 14", 16"	\$35.00
22" x 22"	18", 20"	\$36.00

	WYETEE	WYEBRANCH
		
	In-Line Wye	Wye Branch
Diameter	List Price	List Price
A B C		
8" 6" 6"	\$39.00	\$26.00
10" 8" 6"	\$39.00	-
10" 8" 8"	\$39.00	\$31.00
12" 8" 8"	\$45.00	\$37.00
12" 10" 8"	\$45.00	-
12" 10" 10"	\$51.00	\$42.50
14" 12" 10"	\$55.00	-

RSM		
		
Reducer		
D1	D2	List Price
4"	3"	\$9.00
6"	4"	\$9.00
8"	6"	\$11.50
10"	8"	\$14.00
12"	8"	\$15.00
12"	10"	\$19.00
14"	12"	\$21.00

Flexible Duct

- Each box contains 25' section
- Reinforced grey polyester jacket
- Fiberglass insulation
- Maximum positive pressure of 10" w.g.

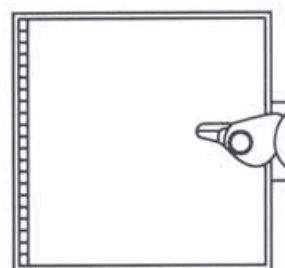
Size	Insulated List Price	Uninsulated List Price
4"	\$31.00	\$26.00
6"	\$41.00	\$34.50
8"	\$49.00	-
10"	\$60.00	-
12"	\$76.00	-
14"	\$92.00	-
16"	\$104.00	-
18"	\$118.00	-
20"	\$147.00	-

Duct Access Doors

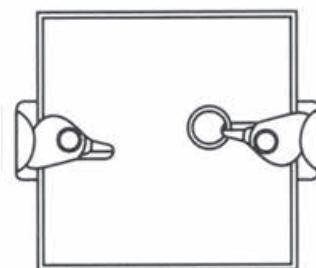
Low Pressure Access Doors

- Hinged access doors feature a piano hinge with single cam latch
- Cam access doors feature two cam latches
- Tested to 4" W.G.
- Self-adhesive backed flange
- Pre-drilled holes

Dimensions	Hinged	Cam
6" x 6"	\$22.50	\$22.50
8" x 8"	\$25.00	\$25.00
10" x 10"	\$28.50	\$28.50
12" x 12"	\$29.50	\$29.50
14" x 14"	\$41.00	\$41.00
16" x 16"	\$46.50	\$46.50
18" x 18"	\$53.50	\$53.50
24" x 24"	\$70.00	\$70.00



Hinged Access Door



Cam Access Door

High Pressure Access Doors

- "Sandwich" duct mounting
- Tested to 20" W.G.
- Available for round and flat ductwork

Round Ductwork Access Doors

Pipe Diameter	Opening	List Price
6" / 7" / 8"	10" x 6"	\$50.00
9" / 10"	10" x 6"	\$50.00
11" / 12"	10" x 6"	\$50.00
14"	10" x 6"	\$50.00
16"	10" x 6"	\$50.00
18"	10" x 6"	\$50.00
20"	16" x 12"	\$85.00
22"	16" x 12"	\$85.00
24"	16" x 12"	\$85.00

Flat Ductwork Access Doors

Opening	List Price
10" x 6"	\$38.00
16" x 12"	\$80.00



Duct Sealant

Design Polymerics DP-1010

- DP-1010 is water-based
- UL Listed
- Premium quality, smooth gray finish
- Recommended up to 15" WG

1 Gallon Pail

Quantity	List Price
1 - 27	\$25.00
28 - 51	\$24.50
52 - 99	\$24.00
100+	\$23.50



United Duct Sealer Uni 828

- High Bonding Strength
- UL Listed

1 Gallon Pail

Quantity	List Price
1	\$55.00

Chip Brush

- For use with either DP-1010 or United Duct Sealer

Size	List Price
2" Brush	\$1.50

Nylon Duct Straps

Size	Quantity	List Price
36 1/2"	50	\$19.50

Stainless Steel Duct Clamps

- 310 Stainless Steel Band
- Quick Release

Size	List Price
6"	\$3.00
8"	\$3.00
10"	\$3.00
12"	\$3.00
14"	\$5.00





GripPle Hanging System

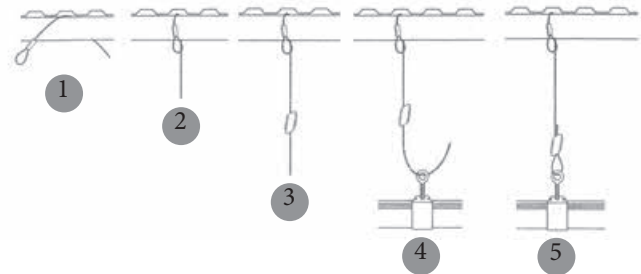
Loop-Fast Hangers

GripPle Loop-Fast is a complete solution for hanging mechanical, electrical and HVAC services. It comes as a ready-to-use suspension kit, available in a range of standard lengths and load ratings. The GripPle system enables quick installations, leading to high productivity on the job site.

The principal element of all GripPle assemblies is the GripPle Hang-Fast Grip, which is not only used to terminate the rope, but is also used to adjust the height.

Stock Notes:

- Complete kit includes GripPle Grip, rope assembly and setting key
- Sold in quantities of 10 per bag
- For static loads only (no lifting)
- Up to 6 times faster than traditional methods



Size	Length (Ft.)	List Price
No. 2 100 lb. Max	5	\$84.50 / bag
	10	\$102.00 / bag
	15	\$118.50 / bag
	30	\$168.00 / bag
No. 3 200 lb. Max	5	\$114.00 / bag
	10	\$123.50 / bag
	15	\$143.50 / bag
	30	\$202.50 / bag

GripPle Accessories

Product	Description	List Price
Corner Saddle	A right-angled reinforcement moulding for rectangular ductwork. Suitable for GripPle sizes #1 - #3.	\$1.50
Wire Rope Cutters	Tool for cutting wire rope. Suitable for GripPle sizes #1 - #4.	\$73.50
Easy Grip Key	GripPle setting/release key with soft feel plastic handle. Suitable for GripPle sizes #1 - #3.	\$5.00

Greenheck G / CW Fan Motors

Fan Model	Factory Part #	HP	List Price
G-65 G-70 CW-65 CW-70	300453	1/30	\$160.00
G-80 G-85 CW-80 CW-85	301639	1/20	\$180.00
G-90 CW-90	301638	1/15	\$180.00
G-95 CW-95	302336	1/8	\$180.00
G99VGM	310108	1/4	\$492.00
G123VGM	309028	1/2	\$512.50
G143VGM	309029	1/2	\$617.50
G143VGM TEFC	311156	1	\$1607.50
CUE101VGM	310108	1/4	\$492.00
CUE141VGM	309029	3/4	\$617.50
CUE141VGM OPD	310359	1	\$696.50
CUE141VGM TEFC	311156	1	\$1607.50

Greenheck Control Damper Parts

Model	Factory Part #	Description	List Price
ESWC	455049	Extended shaft kit for Greenheck control dampers (incl. retaining clip)	\$116.00

Greenheck Fire Damper Fuse Links

Damper Model	Factory Part #	Temperature	List Price
CRD Series	451801	165°	\$19.00
	451802	212°	\$19.00
DFD/FD-150 Series	452904	165°	\$19.00
DFD/FD-350 Series	452905	212°	\$19.00
FSD Series	458201	165°	\$25.00

Price VAV Parts

Model	Description	List Price
CP101	Price Pneumatic Controller	\$297.00
PNACT	Pneumatic actuator for Price SPV	\$131.00



Air Concepts www.airconceptsinc.com	Specialty commercial and industrial air outlets, nozzles and diffusers.
American Air Filter www.aafintl.com	HEPA, extended surface, carbon and panel filters, and filter housings. Collectors: electrostatic, wet, cartridge, fabric and oil mist collectors.
American Aldes www.americanaldes.com	Heat and energy recovery units from 500 CFM to 5,800 CFM. Airflow and zone control systems; exhaust fans.
Armstrong Monitoring www.armstrongmonitoring.com	Hazardous gas monitoring and detection systems.
Blue Duct / AQC Industries www.blueduct.com	Commercial and industrial HDPE underground ductwork and accessories.
Car-Mon Products www.car-mon.com	Custom designed vehicle exhaust and fume control systems.
Creative Metals www.leaderindustries.com	Roof curbs, metal roof curbs, equipment supports, and pipe penetrations.
Design Polymeric www.designpoly.com	Duct sealants, tapes and adhesives, duct wrap film, and duct covers.
DuctSox www.ductsox.com	Fabric duct and air dispersion products and accessories.
Eastern Sheet Metal www.easternsheetmetal.com	Spiral ductwork featuring the Eastern Tite self-sealing system.
Flexmaster www.flexmasterusa.com	Insulated, acoustic and non-insulated flexible ductwork; access doors; sheet metal accessories.
Franklin Control Systems www.franklin-controls.com	HVAC motor starters and variable frequency drives; custom control panels and cooling tower controls; electrical components; kitchen hood controls.
Greenheck www.greenheck.com	<p>Fan and ventilators: roof, sidewall, inline, and ceiling fans and ventilators. Utility, centrifugal and radial blowers including material handling and FRP fans.</p> <p>Laboratory exhaust systems: self-contained Vektor high plume dilution blower systems with options for noise control, variable volume exhaust and energy recovery systems.</p> <p>Kitchen ventilation systems: complete kitchen hood packages with options for extraction and filtration, odor and pollution control, make-up air, fire suppression, utility distribution, and full control and energy management solutions.</p> <p>Make-up air units: optional direct or indirect gas-fired, hot water, steam or electric heat and DX, chilled water, or evaporative cooling.</p> <p>Energy recovery ventilators: up to 100% outside air with optional heat pump, indirect gas-fired, hot water, steam or electric heating and DX, chilled water or evaporative cooling.</p> <p>Packaged ventilation units: up to 100% outside air with integral indirect gas-fired, hot water or electric heating and DX or chilled water cooling.</p> <p>Coils: custom designed hot water, booster, expansion, steam and cooling coils for new and retrofit applications.</p> <p>Dampers: a comprehensive offering of control, fire, smoke, backdraft, bubble tight, thermally broken/insulated and tunnel transit dampers and accessories.</p> <p>Louvers: a wide range of air control and architectural louvers including screen walls, sun shades and custom designed configurations.</p>
Kees www.kees.com	Specialty commercial sheet metal items and accessories, including hoods, grills, access doors and custom products.
Kinetics Noise Control www.kineticsnoise.com	Full design services for custom vibration control products, including vibration isolation systems, seismic restraint systems, seismic curbs and floating floors.

Lennox www.lennoxcommercial.com	<p>Roof top units: a complete offering of high-efficiency packaged DX roof top equipment from 2 to 50 tons with optional Sun Source Commercial Energy System for added efficiency.</p> <p>Controls systems: complete L Connection Network controls allowing for offsite monitoring and automated service notifications. Easy to use Prodigy Control system to better control your roof top systems. Commercial grade touch screen thermostats.</p> <p>Split systems: Extensive line of split systems AC/HP, AHU and Indoor Coils ranging from 3-20 tons.</p> <p>Heaters: High efficiency furnaces and high-performance unit heaters from 30-390 BTUH.</p>
Markel www.markel-products.com	<p>Commercial, industrial, hazardous location, and washdown unit heaters; wall heaters; wall convectors; baseboard heaters; infrared heaters; and duct heaters.</p>
Nederman www.nedermanusa.com	<p>Source capture equipment: dust, fume, smoke, vehicle exhaust; flexible arms for table top and laboratory exhaust.</p> <p>Dust collectors: fabric and cartridge</p>
Nordfab www.nordfab.com	<p>Clamp-together ductwork featuring the Quick-Fit system.</p>
Powered Aire www.poweredaire.com	<p>Commercial and industrial air curtains/air doors with electric, hot water, steam, indirect gas or direct gas fired heat options.</p>
Price Industries www.price-hvac.com	<p>Air distribution: a complete offering of grilles, registers, and diffusers including custom designed products and specialty architectural finishes.</p> <p>Terminal units: an extensive offering of terminal units including single-duct, dual-duct, and fan powered units available with integral silencers, heating coils, and controls.</p> <p>Displacement ventilation systems: standard and custom designed diffusers, terminal units and controls for use in displacement and underfloor displacement system.</p> <p>Critical environment systems: Air distribution systems for hospital, laboratory and clean room environments including complete operating and clean room ceiling systems, venturi valves and controls.</p> <p>Radiant systems: Active and passive chilled beams; chilled sails; radiant panels for heating and cooling applications.</p> <p>Controls: Digital rooftop controls; Venturi Valve controls; DDC zone controllers for terminal units, underfloor units and radiant products; hose kits and valves.</p> <p>Air handling units: high-performance fan coil units available in both horizontal and vertical arrangements for concealed or exposed applications.</p> <p>Noise control: full acoustical design services for custom noise control products including commercial and industrial duct silencers, sound enclosures and acoustical panels.</p>
Pro Hydronic Specialties www.prohydronicspecialties.com	<p>Hydronic balancing valves with automatic flow limiters, manual balancing venturi valves, stainless steel braided hose kits, coil hook up kits and accessories.</p>
TSI www.tsi.com	<p>Flow hoods and meters for balancing and measuring air flow, IAQ, and hydronic systems.</p>
Van-Packer www.vpstack.com	<p>Venting systems for chimneys, grease ducts, engine and turbine exhausts.</p>
Viron www.vironintl.com	<p>Corrosion resistant fume scrubbers; FRP and PVC duct, fans, hoods and tanks.</p>
Young Regulator www.youngregulator.com	<p>Concealed damper regulators and damper accessories.</p>

www.colbyequipment.com

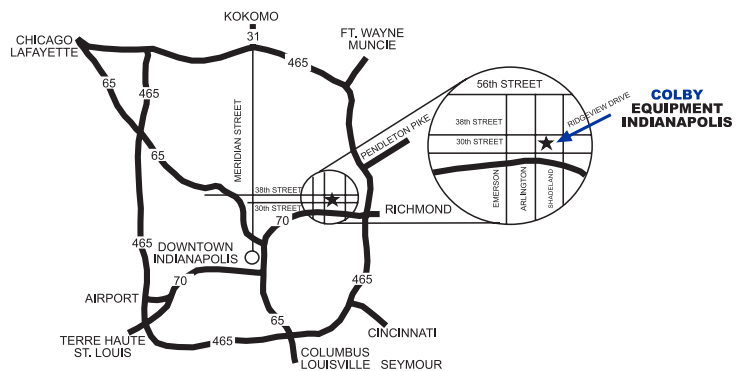
Representing the industry leaders in mechanical and air distribution equipment since 1930.

COLBY equipment

3048 North Ridgeview Drive • Indianapolis, IN 46226

Main Office and Warehouse

3048 North Ridgeview Drive
Indianapolis, Indiana 46226
(317) 545-4221
(800) 443-2981



Branch Office and Warehouse

3107 Cannongate Drive
Fort Wayne, Indiana 46808
(260) 482-3773
(866) 482-3773

